

Instruction handbook

Language **English**
Translation
Document No. 5.01046.06
Part No. 354844
Stand 11-Nov-2014

be in motion **be in motion**




BAUMÜLLER

b maXX

(BM4-F-)DIO-XX
(BM4-F-)FIO-XX

Digital IO module

BM4400, BM4400 ES
BM4600, BM4600 ES
BM4700, BM4700 ES

E	5.01046.06
----------	------------

Read the Manual before starting any work!

Copyright This Instruction handbook may be copied by the owner in any quantity, but only for internal use. This Instruction handbook may not be copied or reproduced, in whole or in part, for any other purposes.
The use and disclosure of information contained in this Instruction handbook are not permitted.
Designations and company marks contained in this Instruction handbook could be trademarks, the use of which by third parties for their own purposes could violate the rights of the rights holder.

Preliminary information **Warning** Insofar as this document is identified as being preliminary information, the following applies:
this version is regarded as providing advance technical information to users of the described devices and their functions at an early enough time in order to adapt to any possible changes or expanded functionality.
This information must be regarded as being preliminary, as it has not yet passed through Baumüller's internal review process. In particular, this information is still subject to changes, thus no legal liability can be derived from this preliminary information. Baumüller assumes no liability for damages that might arise from this possibly faulty or incomplete version.
If you detect or suspect any content errors and/or major form errors in this preliminary information, we request that you notify the Baumüller support specialist responsible for you. Please provide us, via this employee, with your insights and comments so that we can take them into account and include them when transitioning from the preliminary information to the final information (as reviewed by Baumüller).
The conditions stipulated in the following section under „Obligatory“ are invalid in case of preliminary information.

Obligatory This Instruction handbook are a part of the equipment/machine. This Instruction handbook must be available to the operator at all times and must be in legible condition. If the equipment/machine is sold or moved another location, this Instruction handbook must be passed on by the owner together with the equipment/machine.
After any sale of the equipment/machine, this original and all copies must be handed over to the buyer. After disposal or any other end use, this original and all copies must be destroyed.
When the present Instruction handbook is handed over, corresponding sets of Instruction handbooks of a previous version are automatically invalidated.
Please note that the specifications/data/information **are current values according to the printing date**. These statements are **not legally binding** with regard to measurements, computation or calculations.
Baumüller Nürnberg GmbH reserves the right, in developing its products further, to change the technical specifications and handling of it products concerned without prior notice.
No liability can be accepted concerning the correctness of this Instruction handbook unless otherwise specified in the General Conditions of Sale and Delivery.

© **Baumüller Nürnberg GmbH**

Ostendstr. 80 - 90
90482 Nuremberg
Germany

Tel. +49 9 11 54 32 - 0
Fax: +49 9 11 54 32 - 1 30

Email: mail@baumueller.de
Internet: www.baumueller.de



Table of Contents

1	General	5
1.1	Information on this Instruction handbook	5
1.2	Key to symbols	6
1.3	Limitation of liability	7
1.4	Copyright protection	7
1.5	Other applicable documents	8
1.6	Spare parts	8
1.7	Disposal	8
1.8	Guarantee provisions	8
1.9	Customer service	8
1.10	Used terms	9
1.11	List of associated documentations	9
2	Safety	11
2.1	Contents of the Instruction Handbook	11
2.2	Changes and modifications to the device	11
2.3	Use, compliant with intended purpose	12
2.4	Responsibility of the operating company	12
2.5	Training of the personnel	13
2.6	Special hazards	14
2.7	Fire fighting	15
2.8	Safety equipment	16
2.9	Behavior in hazardous situations or at accidents	16
2.10	Signs and labels	17
3	Technical Data	19
3.1	Electrical data	19
3.2	Operation conditions	20
4	Design and Operation	21
4.1	Function	22
4.2	BM-F-DIO/FIO-XX for standard controller	23
4.2.1	Slots BM4-F-DIO/FIO-XX for standard controller	23
4.2.2	Type plate BM4-F-DIO/FIO-XX for standard controller	25
4.2.3	Type code BM4-F-DIO/FIO-XX for standard controller	26
4.2.4	Danger areas BM4-F-DIO/FIO-XX for standard controller	26
4.3	DIO/FIO-XX in ES controller	27
4.3.1	Position DIO/FIO-XX in ES controller	28
4.3.2	Type plate DIO/FIO-XX in ES controller	29
4.3.3	Type code DIO/FIO-XX in ES controller	29
4.4	Display and operation elements	29
5	Transport and Packaging	31
5.1	What to observe when transporting	31
5.2	Transport inspection	31
5.3	Unpacking	32
5.4	Disposal of the packaging	32



Table of Contents

6	Mounting	33
6.1	Preparation of mounting	33
6.2	Assembly	34
7	Installation	37
7.1	Safety notes	37
7.2	Requirements on the electrical connection	38
7.3	Requirements for the connection cables	38
7.4	Connection diagrams	39
7.5	Installation procedure	41
7.6	Internal circuit diagram Digital IO module	42
8	Commissioning/Operation	43
8.1	Safety notes	43
8.2	Procedure of the commissioning	44
8.2.1	Recognition of the Digital IO module	44
8.2.2	Testing of the Digital IO module	49
9	Maintenance	53
9.1	Safety notes	53
9.2	Environmental condition	53
9.3	Inspection intervals - maintenance notes	54
9.4	Repairs	54
10	Troubleshooting and Fault correction	55
10.1	Behavior in case of malfunctions	55
10.2	Fault detection	56
10.3	Error handling	59
10.3.1	Error reset	60
10.3.2	Error messages	61
11	Disposal	65
11.1	Safety notes	65
11.2	Disposal facilities/authorities	66
	Appendix A - Declaration of Conformity	67
	Table of Figures	69
	Index	71
	Overview of Revisions	73

1

GENERAL

1.1 Information on this Instruction handbook

The **DIO/FIO-XX** or **BM4-F-DIO/FIO-XX** can be operated in combination with a **b maXX 4000**, only.

Therefore this Instruction handbook is an addition to the Instruction handbook of **b maXX** BM4400, BM4400 ES, BM4600, BM4600 ES, BM4700, BM4700 ES (short **b maXX 4000**) 5.12008.

The basic prerequisite for safe working is compliance with all the safety and handling instructions stated in the instruction handbook **b maXX 4000**.

Additionally, the valid accident prevention regulations and general safety regulations applicable to the scope of application the device must be complied with.

Read this Instruction handbook and the Instruction handbook **b maXX 4000**, particularly the safety notes chapter, completely before beginning any work on the device. This Instruction handbook is part of the product and must be kept accessible to personnel at all times in the immediate vicinity of the device.

1.2 Key to symbols

Warning notes

Warning notes are identified by symbols in this Instruction handbook. The notes are introduced by signal words that express the extent of the danger.

It is imperative that these notes be complied with and are conscientiously regarded in order to prevent accidents, personal injury and material damage.



DANGER!

...this indicates a hazardous situation which, if not avoided, will result in death or serious injury.



WARNING!

...this indicates a hazardous situation which, if not avoided, could result in death or serious injury.



CAUTION!

...this indicates a hazardous situation which, if not avoided, could result in minor or moderate injury.



NOTICE!

...indicates a hazardous situation which, if not avoided, may cause material damage.

Recommendations



NOTE!

...highlights useful hints and recommendations, as well as information for the efficient and trouble-free use.

1.3 Limitation of liability

All specifications and notes in these instruction handbook were compiled taking into account the applicable standards and regulations, the state of the art and our knowledge and experience of many years.

The manufacturer assumes no liability for damages due to:

- noncompliance with the instruction handbook
- usage for other than the intended purpose
- usage by untrained personnel

The actual scope of delivery can vary in case of optional equipment, laying claim to additional order options, or on account of the latest technical changes to the explanations and representations described herein.

The user bears the responsibility for performing service and initial operation in accordance with the safety regulations of the applicable standards and all other relevant governmental or local regulations concerning the dimensioning and protection of conductors, grounding, disconnectors, overcurrent protection, etc.

The person who carried out the mounting or installation is liable for any damage incurred when assembling or connecting the device.

1.4 Copyright protection

The instruction handbook must be treated confidentially. It is to be used exclusively by personnel who work with the device. The consignment of the instruction handbook to third persons without the written permission of the manufacturer is prohibited.



NOTE!

The specific contents, text, drawings, images and other representations are copyrighted and subject to industrial property rights. Any prohibited usage is punishable by law.

CANopen[®]

is a registered trademark of CAN in Automation e.V

EnDat[®]

is a registered trademark of Dr. Johannes Heidenhain GmbH,
83301 Traunreut, Germany

EtherCAT[®]

is a registered trademark of Beckhoff Automation GmbH,
33415 Verl, Germany

Hiperface[®]
SinCos[®]

is a registered trademark of SICK STEGMANN GmbH,
78166 Donaueschingen, Germany



NOTE!

Please note, that BAUMÜLLER is not responsible to examine whether any (industrial property) rights of third parties are infringed by the application-specific use of the BAUMÜLLER products/components or the execution.

1.5 Other applicable documents

1.5 Other applicable documents

Components of other manufacturers are integrated into the device. For these purchased parts, hazard assessments have been performed by the respective manufacturers. The compliance of the design construction with the applicable European and national regulations has been declared for the components by the respective manufacturers.

1.6 Spare parts



WARNING!

False or flawed spare parts can lead to damage, malfunction or complete failure, thus endangering safety.

Therefore:

- Only use original spare parts of the manufacturer.

Procure spare parts through an authorized dealer or directly from the manufacturer.

1.7 Disposal

Insofar as no take-back or disposal agreement has been made, please disassemble units correctly and properly recycle the constituent parts.

See also **b maXX 4000** 5.12008, chapter Disposal.

1.8 Guarantee provisions

The guarantee provisions are stated in a separate document of the sales documents.

The devices described herein may only be operated in accordance with the stipulated methods, procedures and conditions. Anything else not presented here, including the operation of devices in mounted positions, is not permitted and must be cleared with the plant on a case-by-case basis. If the devices are operated in any other manner than as described within this Instruction handbook, then all guarantee and warranty rights are rendered null and void.

1.9 Customer service

Our customer service is available to provide you with technical information.

Info on the responsible contact persons is available at all times via telephone, fax, mail or the Internet.

1.10 Used terms

The term function module or the designation DIO/FIO-XX (ES controller) or BM4-F-DIO/FIO-XX (standard controller) is also used in this documentation for the Baumüller product „b maXX Digital IO module“. A list of the abbreviations used can be found in **b maXX 4000** 5.12008, Appendix A: Abbreviations.

1.11 List of associated documentations

Instruction handbook

	Doc No.	Part No. German	Part No. English
Instruction handbook basic unit b maXX 4400, 4600, 4700 (ES)	5.12008	444495	444496

Parameter manual

	Doc No.	Part No. German	Part No. English
Parameter manual basic unit b maXX 4400, 4600, 4700 (ES)	5.03039	376339	377548

Instruction handbook function modules

	Doc No.	Part No. German	Part No. English
Analog IO module BM4-F-AIO-XX or AIO-XX	5.01045	354844	372665
Digital IO module BM4-F-DIO/FIO-XX or DIO/FIO-XX	5.01046	354843	372666
Encoder module BM4-F-ENC-XX or ENC-XX	5.01042	354842	372861
Incremental encoder emulation module BM4-F-IEE-XX or IEE-XX	5.02020	354858	376728
SSI encoder emulation module BM4-F-SIE-XX or SIE-XX	5.03056	377123	379049

Instruction handbook option modules

	Doc No.	Part No. German	Part No. English
DISC-NT slave BM4-O-DNT-XX	5.03007	367670	-
CANopen slave BM4-O-CAN-03	5.02014	368692	368693
CANopen slave programming handbook for controller	5.02065	368694	372860
CANopen over EtherCAT programming handbook	5.07017	413208	432414
CANopen slave for b maXX PLC application handbook	5.03057	376486	376487
b maXX drive PLC	5.01051	366197	354845
b maXX drive PLC application handbook	5.02004	366198	372017
BM4-O-ETH-01, BM4-O-ETH-02, BM4-O-CAN-04 for b maXX PLC	5.03001	366202	372042
BM4-O-ETH-01, BM4-O-ETH-02, BM4-O-CAN-04 CANopen master for b maXX PLC application handbook	5.03002	366203	372043
CANsync master for b maXX PLC	5.02056	366199	372025
CANsync slave for b maXX	5.02064	366201	372041
CANsync for b maXX PLC application handbook	5.02066	366200	372039
IEI for b maXX PLC	5.02013	366204	372044
PROFIBUS-DP slave for b maXX	5.03040	376488	376489
PROFIBUS-DP slave for b maXX PLC application handbook	5.03058	376490	376491
PROFIBUS-DP slave for b maXX controller programming handbook	5.03045	376757	377294

1.11 List of associated documentations

	Doc No.	Part No. German	Part No. English
SERCOS slave module BM4-O-SER-01	5.04012	380910	381069
SERCOS slave module BM4-O-SER-01 parameter handbook	5.04013	381652	381653
EtherCAT slave module BM4-O-ECT-01/ECT-01	5.06003	394953	394954
Ethernet with EtherCAT master for b maXX drive PLC	5.07001	407996	407997
Ethernet with EtherCAT master for b maXX drive PLC application handbook	5.07002	407998	407999
Ethernet with EtherCAT for b maXX drive PLC	5.10018	433997	
POWERLINK Controlled Node BM4-O-PLK-01/PLK-01 ES	5.12072	444497	444498
POWERLINK Controlled Node BM4-O-PLK-01 ES application handbook	5.13013	445131	445132

2

SAFETY

This section provides an overview of all of the important safety aspects for optimum protection of personnel as well as for the safe and problem-free operation.

2.1 Contents of the Instruction Handbook

Each person who is tasked with performing work on or with the device must have read and understood this Instruction Handbook and the Instruction Handbook of **b maXX 4000 5.12008** before working with the device. This also applies if the person involved with this kind of device or a similar one, or has been trained by the manufacturer.

2.2 Changes and modifications to the device

In order to prevent hazards and to ensure optimum performance, no changes, additions or modifications may be undertaken on the device that have not been explicitly approved by the manufacturer.

2.3 Use, compliant with intended purpose

2.3 Use, compliant with intended purpose

The **BM4-F-DIO/FIO-XX** is used compliant with its intended purpose, if it is built-in/operated within **b maXX 4000** controller, only.

The **Digital IO module** is considered as being used compliant with its intended purpose if all notes and information of this Instruction handbook and the Instruction handbook **b maXX 4000** 5.12008 are adhered to.



WARNING!

Danger arising from usage for an unintended purpose!

Any usage that goes beyond the intended purpose and/or any non-compliant use of the device can lead to dangerous situations.

Therefore:

- Only use the **Digital IO module** compliant with its intended purpose.
- Note all specifications of this Instruction handbook and the Instruction handbook **b maXX 4000** 5.12008.
- Ensure that only qualified personnel work with/on this **Digital IO module**.
- When configuring, ensure that the **Digital IO module** is always operated within its specifications.
- The **Digital IO module** may only be operated in a technically flawless condition.
- Only operate the **Digital IO module** in combination with components approved by Baumüller Nürnberg GmbH.

2.4 Responsibility of the operating company

The device will be used in commercial areas. Thus, the proprietor of the device is subject to the legal work safety regulations.

Along with the notes on work safety in this Instruction handbook and the Instruction handbook **b maXX 4000** 5.12008, the safety, accident prevention and environmental protection regulations valid for the area of application of this device must be complied with. Whereby:

- The operating company must inform himself about the applicable work health and safety regulations and ascertain, in a hazard assessment, any additional hazards that could arise from the special working conditions in the use area of the device. These must then be implemented in the form of operating instructions for operation of the device.
- This Instruction handbooks must be kept accessible to personnel working with the device at all times in the immediate vicinity of the device.
- The specifications of the Instruction handbooks must be adhered to completely and without exception.
- The device may only be operated in a technically faultless and operationally safe condition.

2.5 Training of the personnel



WARNING!

Risk of injury due to insufficient qualifications!

Improper handling can lead to significant personal injury and material damage.

Therefore:

- Certain activities can only be performed by the persons stated in the respective chapters of this Instruction handbook.

In this Instruction handbook, the following qualifications are stipulated for various areas of activity:

- **Operating personnel**

- The drive system may only be operated by persons who have been specially trained, familiarized and authorized.
- Troubleshooting, maintenance, cleaning, maintenance and replacement may only be performed by trained or familiarized personnel. These persons must be familiar with the Instruction handbook and act accordingly.
- Initial operation and familiarization may only be performed by qualified personnel.

- **Qualified personnel**

- Electrical engineers authorized by Baumüller Nürnberg GmbH, and qualified electricians of the customer or a third party who have learned to install and maintain Baumüller drive systems and are authorized to ground and identify electrical power circuits and devices in accordance with the safety engineering standards of the company.
- Qualified personnel have had occupational training or instruction in accordance with the respective locally applicable safety engineering standards for the upkeep and use of appropriate safety equipment.

2.6 Special hazards

In the following section, the remaining marginal risks will be stated that have been identified as a result of the hazard analysis.

Observe the safety notes listed here and the warning notes in the further chapters of this manual to reduce health risks and dangerous situations.

Electrical current



DANGER!

Risk of fatal injury from electrical current!

There is an immediate risk of fatal injury if live electrical parts are contacted. Damage to the insulation or individual components can be life-threatening.

Therefore:

- Switch off the electrical power immediately in case of damage to the power supply insulation.
- Only allow work on the electrical system to be performed by qualified personnel.
- Switch off the current when any kind of work is being performed on the electrical system and ensure safety before switching on again.

Danger from residual energy



DANGER!

Risk of fatal injury from electrical current!

Stored electric charge.

Discharge time of the system = discharge time of the device with the longest DC link discharge time connected to the DC link.

See Instruction handbook **b maXX 4000** 5.12008, chapter Electrical Data.

Therefore:

- Do not touch electrically live parts before taking into account the discharge time of the capacitors.
- Pay attention to the corresponding notes on the device.
- If additional capacitors are connected to the DC link, the DC link discharge can take a much longer time. In this case, the necessary waiting period must itself be determined or a measurement made as to whether the equipment is de-energized. This discharge time must be posted, together with an IEC 60417-5036 (2002-10) warning symbol, on a clearly visible location of the control cabinet.

Moving components



WARNING!

Risk of injury from moving components!

Rotating components and/or components moving linearly can result in severe injury.

Therefore:

- Do not touch moving components during operation.
- Do not open any covering during operation.
- The amount of residual mechanical energy depends on the application. Powered components still turn/move for a certain length of time even after the power supply has been switched off. Ensure that adequate safety measures are taken.

2.7 Fire fighting



DANGER!

Risk of fatal injury from electrical current!

There is a risk of electric shock if an electrically-conductive, fire-extinguishing agent is used.

Therefore:

- Use the following fire-extinguishing agent:



ABC powder / CO₂

2.8 Safety equipment



WARNING!

Risk of fatal injury due to non-functional safety equipment!

Safety equipment provides for the highest level of safety in a facility. Even if safety equipment makes work processes more awkward, under no circumstances may they be circumvented. Safety can only be ensured by intact safety equipment.

Therefore:

- Before starting to work, check whether the safety equipment is in good working order and properly installed.

2.9 Behavior in hazardous situations or at accidents

Preventive measures

- Always be prepared for accidents or fire!
- Keep first-aid equipment (e.g. first-aid kits, blankets, etc.) and fire extinguishers readily accessible.
- Familiarize personnel with accident signalling systems, first aid equipment and life saving equipment.

And if something does happen: respond properly.

- Stop operation of the device immediately with an EMERGENCY Stop.
- Initiate first aid measures.
- Evacuate persons from the danger zone.
- Notify the responsible persons of the site.
- Alarm medical personnel and/or the fire department.
- Keep access routes clear for rescue vehicles.

2.10 Signs and labels

The following symbols and information signs are located in the working area. They refer to the immediate vicinity in which they are affixed.



WARNING!

Risk of injury due to illegible symbols!

Over the course of time, stickers and symbols on the device can become dirty or otherwise unrecognizable.

Therefore:

- Maintain all safety, warning and operating labels on the device in easily readable condition.



Electrical voltage

Only qualified personnel may work in work areas that identified with this.

Unauthorized persons may not touch working materials marked correspondingly.



DANGER!

Risk of fatal injury from electrical current!

See [▶Danger from residual energy◀](#) auf Seite 14.



CAUTION!

Risk of injury due to hot surface!

Therefore:

- Wear protective gloves



TECHNICAL DATA

3.1 Electrical data

	DIO-01 / DIO-11 ¹⁾	FIO-01 / FIO-11 ¹⁾
Supply voltage	24 V (19 to 28 V) ³⁾	
Current consumption (24 V)	max. 2.0 A	
Current consumption (internal)	max. 50 mA	
Number of inputs	4	
Evaluation of inputs	edges (2 inputs can be used for writing on one parameter)	
Number of IO-linking groups input	4	
Max. input current	2 mA	5 mA
(Typical) transit time delay, input side	4 ms	10 µs
Digital input voltage	0 (LOW) = 0 to 5 V; 1 (HIGH) = 12 to 28 V	
Number of outputs	4	
Number of IO-linking groups output	4	
Max. output current	0,5 A	
Short circuit proof at outputs	yes, limited by current with tripping ²⁾	

¹⁾ Unlike DIO/FIO-01 inside DIO/FIO-11 the contact „ground external“ is **not** connected to PE.

²⁾ On tripping, there appears an error message on the controller.

³⁾ Limit the current to 2.5 A. (Due to this also UL 508 C with a maximum current of 4 A will be considered.)

3.2 Operation conditions

The operation conditions of the **BM4000**, see **b maXX 4000** 5.12008 are valid.

Transportation temperature range	- 25 °C bis + 70 °C
Transportation climate classification EN 60721-3-2	2 K 3
Storage temperature range	- 25 °C bis + 55 °C
Storage climate classification EN 60721-3-1	1 K 4



NOTICE!

Normally, only non-conductive pollution occurs. Any conductive pollution, if for a short-term or permanently, is forbidden and can cause the destruction of the device. The customer is responsible for destructions, caused by conductive materials.

DESIGN AND OPERATION

A **b maXX BM4000** device consists of power unit and controller part

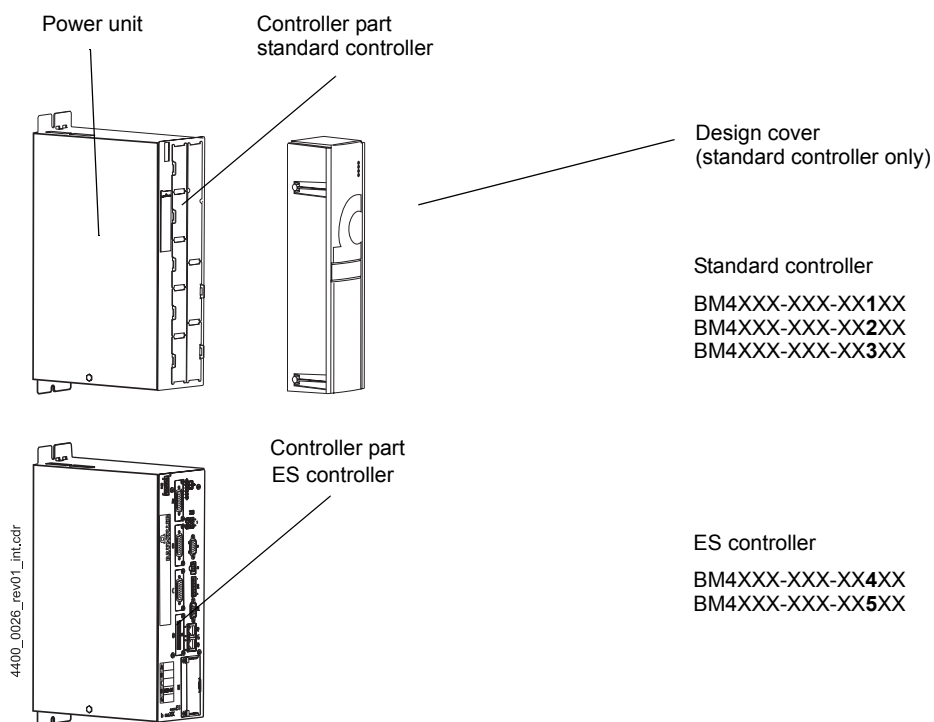


Figure 1: **b maXX BM4000**)

The **BM4-F-DIO/FIO-XX** is designed as plug-in module within the standard controller and can be replaced or upgraded.

The **DIO/FIO-XX** is mounted stationary in the ES controller.

4.1 Function

The **Digital IO module** has inputs and outputs for digital signals in 24 V industry logic. Digital output can be obtained from the internally processed signals (e.g. for relay controls). Digital signals can be passed on by the inputs to the controller (e.g. switching contacts, etc.).

Technical data of the **Digital IO module** can be found in the chapter [▶Technical Data◀](#) from page 19.



NOTE!

The operation with ProDrive is described, only. Please contact Baumüller Nürnberg GmbH or visit our website www.baumueller.de for download, if the software is not available.

Standard controller

with plug-in slots to enlarge the controller functionality with function and option modules, e.g. encoder modules, analog inputs/outputs or field bus connections.



NOTICE!

Plug-in module, which has not been manufactured from Baumüller Nürnberg GmbH. Modules of other manufacturers can damage/destroy the device.

Only use BM4-F-XXX- and BM4-O-XXX-plug-in modules.

ES controller

with not exchangeable function and option modules.

The **Digital IO module** is available as plug-in module **BM4-F-FIO/DIO-XX** for standard controller and as **FIO/DIO-XX** built-in the ES controller.

4.2 BM-F-DIO/FIO-XX for standard controller

The **BM4-F-DIO/FIO-XX** is a plug-in module for the controller of **b maXX 4000-series**.

The **BM4-F-DIO/FIO-XX** plug-in module is connected to the controller with a plug on its back.

On the front is a 10-pole connector.

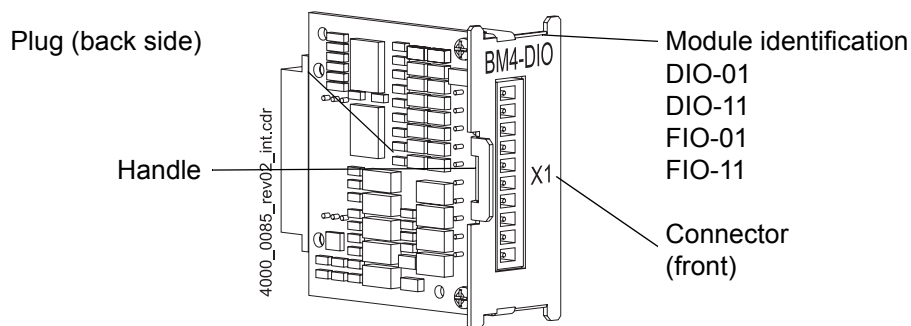
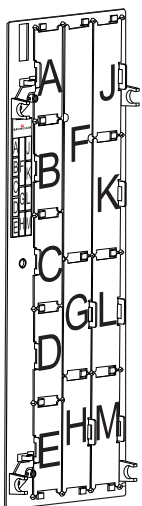


Figure 2: Digital IO module for standard controller

4.2.1 Slots BM4-F-DIO/FIO-XX for standard controller

Function and option modules can be plugged in the slots of the controller part. Each position is clearly identified by a character.

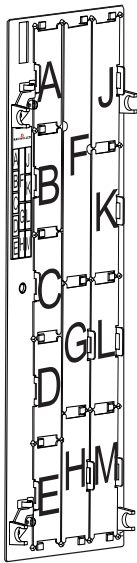
Up to 5 **Digital IO modules** can be plugged (slots **A, B, C, D** and **E**, unless they are occupied by other plug-in modules). The slots **A, B, C** and **E** have identical functions. The preferred slot **D** provides a special, the fast touch probe evaluation.



A	BM4-F-DIO-01	BM4-F-DIO-11	BM4-F-FIO-01	BM4-F-FIO-11
B	BM4-F-DIO-01	BM4-F-DIO-11	BM4-F-FIO-01	BM4-F-FIO-11
C	BM4-F-DIO-01	BM4-F-DIO-11	BM4-F-FIO-01	BM4-F-FIO-11
D	BM4-F-DIO-01	BM4-F-DIO-11	BM4-F-FIO-01	BM4-F-FIO-11
E	BM4-F-DIO-01	BM4-F-DIO-11	BM4-F-FIO-01	BM4-F-FIO-11
F				
G				
H				
J				
K				
L				
M				

Optional plug-in modules (function or option modules) can be upgraded dependent on the existing controller type.

Possible combinations function modules/option modules



	Function modules										Option modules												
	BM4-F-ENC-XX (encoder 1 for motor control recommended)	BM4-F-ENC-XX (encoder 2)	BM4-F-AIO-01 (analog I/O)	BM4-F-AIO-02/03/04 (analog I/O)	BM4-F-DIO-XX (digital I/O)	BM4-F-FIO-XX (fast digital I/O)	BM4-F-IEE-XX (incremental encoder emulation)	BM4-F-SIE-XX (SSI encoder emulation)	BM4-F-UME-XX (mains voltage measurement)	BM4-O-SER-XX (Sercos slave)	BM4-O-PRO-01 (Profibus slave)	BM4-O-CAN-03 (CANopen slave)	BM4-O-ECT-01 (EtherCAT slave) for controller	BM4-O-PLK-01 (POWERLINK Controlled Node) für Regler	BM4-O-EIP-01 (Ethernet-IP) für Regler	BM4-O-PLC-XX (SPS)	BM4-O-CAN-04* (CANopen master)	BM4-O-IEI-XX* (incremental counter module)	BM4-O-ETH-01* (Ethernet)	BM4-O-ETH-02* (Ethernet + CANopen master)	BM4-O-ECT-01* (EtherCAT slave) for PLC	BM4-O-ECT-02* (Ethernet + EtherCAT master)	BM4-O-ECT-03* (Ethernet + EtherCAT cluster)
A	X	-	-	o	o	o	-	o	o	-	-	-	-	-	-	-	-	-	-	-	-	-	-
B	-	X	-	o	o	o	-	X	o	-	-	-	-	-	-	-	-	-	-	-	-	-	-
C	-	-	-	o	o	o	V	-	o	-	-	-	-	-	-	-	-	-	-	-	-	-	-
D	-	-	-	o	X	X	-	-	X	-	-	-	-	-	-	-	-	-	-	-	-	-	-
E	-	-	X	X	o	o	-	-	-	-	-	-	-	-	-	-	-	-	-	-	-	-	-
F	Controller unit																						
G	-	-	-	-	-	-	-	-	-	o	o	o	o	o	o	o	X	X	X	X	X	X	X
H	-	-	-	-	-	-	-	-	-	X	X	X	X	X	X	X	o	-	o	o	o	o	o
J	-	-	-	-	-	-	-	-	-	-	P	P	-	-	-	-	o	o	o	o	-	-	-
K	-	-	-	-	-	-	-	-	-	-	P	P	-	-	-	-	o	o	o	o	o	o	o
L	-	-	-	-	-	-	-	-	-	-	P	P	-	-	-	-	o	o	o	o	o	o	o
M	-	-	-	-	-	-	-	-	-	-	P	P	-	-	-	-	o	o	o	o	o	o	o

- X:** preferred slot
Baumüller Nürnberg GmbH recommends, in order to reach the highest functional range, to insert the plug-in modules into these slots.
- o:** possible slot
only if the preferred slot is occupied, we recommend in order to reach the highest functional range, to insert the plug-in modules into this slot.
- P:** only possible, if on slot G or H a PLC module (PLC) is plugged and the PLC (and not the controller) operates the communication to the field bus slave module.
- V:** dependent on controller hardware
- not possible - card doesn't work in this slot.
- * precondition for these cards is an inserted PLC module.



NOTE!

Only 2 analog outputs can be parametrized or linked even more than one AIO module is plugged.

**NOTE!**

EtherCAT option modules **must not** be plugged in slot **J** of a 3-rowed controller unit, because the module can be damaged.

In case another BM4X-X-XXX plug-in module is plugged in an unsuitable slot, it will not operate. We have made sure, that neither the module nor the device are damaged.

4.2.2 Type plate BM4-F-DIO/FIO-XX for standard controller

The type plate can be found on the connector on the back side of the **BM4-F-DIO/FIO-XX**.
The type code and the serial No. are printed on the type plate.

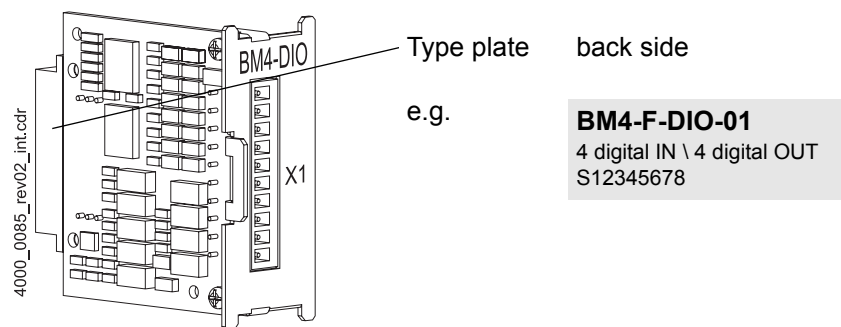


Figure 3: Type plate **BM4-F-DIO/FIO-XX** for standard controller

4.2 BM-F-DIO/FIO-XX for standard controller

4.2.3 Type code BM4-F-DIO/FIO-XX for standard controller



NOTE!

This type code is valid for the **BM4-F-DIO/FIO-XX** of series **b maXX 4000** exclusively. For other plug-in modules are different type codes available.

Type code:

BM4 -F - DIO - XX

Device family, in which the plug-in module can be built in

BM4 -E - DIO - XX

Type of plug-in module (function module)

BM4 -F - DIO - XX

Name of plug-in module (Digital IO module)

BM4 -F - DIO - XX

Version plug-in module (No. of inputs/outputs)

01: 4 digital inputs and 4 digital outputs

11: 4 digital inputs and 4 digital outputs

(Ground external **not** internal connected with PE)

BM4 -F - FIO - XX

Device family, in which the plug-in module can be built in

BM4 -E - FIO - XX

Type of plug-in module (function module)

BM4 -F - FIO - XX

Name of plug-in module (Fast digital IO module)

BM4 -F - FIO - XX

Version plug-in module (No. of inputs/outputs)

01: 4 digital inputs and 4 digital outputs

11: 4 digital inputs and 4 digital outputs

(Ground external **not** internal connected with PE)

4.2.4 Danger areas BM4-F-DIO/FIO-XX for standard controller

The **BM4-O-AIO-XX** can be operated in combination with **BM4000**, only. Please note all safety notes of the basic unit **b maXX BM4000**.

4.3 DIO/FIO-XX in ES controller

The **DIO-XX/FIO** is mounted stationary in the ES controller.

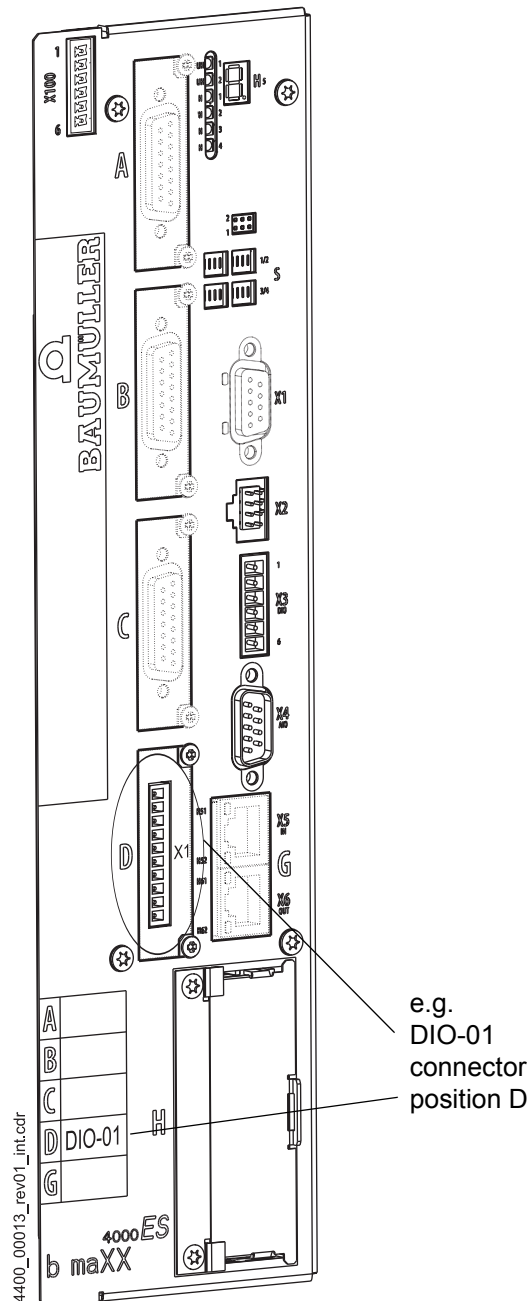


Figure 4: **DIO/FIO-XX** in ES controller

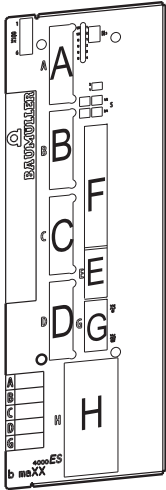
The controller is ordered with the desired function/option modules, these are mounted stationary (exception slot H) and cannot be changed. Only the option module in slot H can be changed/added.

4.3 DIO/FIO-XX in ES controller

4.3.1 Position DIO/FIO-XX in ES controller

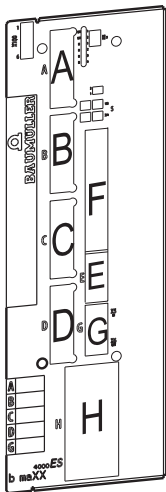
Each position is clearly identified by a character.

The **DIO/FIO-XX** can be used at the following position.



A	DIO-01, DIO-11, FIO-01, FIO-11
B	DIO-01, DIO-11, FIO-01, FIO-11
C	DIO-01, DIO-11, FIO-01, FIO-11
D	DIO-01, DIO-11, FIO-01, FIO-11
F	Controller
G	
H	

Combinations function modules/option modules



	Function modules								Option modules							
	BM4-F-ENC-XX (encoder 1) for motor control recommended	BM4-F-ENC-XX (encoder 2)	BM4-F-AIO-01 (analog I/O)	BM4-F-AIO-02/03/04 (analog I/O)	BM4-F-DIO-XX (digital I/O)	BM4-F-FIO-XX (fast digital I/O)	BM4-F-IEE-XX (incremental encoder emulation)	BM4-F-SJE-XX (SSI encoder emulation)	BM4-O-ECT-01 (EtherCAT slave) for controller	BM4-O-PLK-01 (POWERLINK Controlled Node) for controller	BM4-O-VAR-01 (VARAN slave) for controller	BM4-O-SER-XX (Sercos slave) for controller	BM4-O-PRO-XX (Profibus slave) for controller	BM4-O-CAN-03 (CANopen slave) for controller	BM4-O-EIP-01 (Ethernet-IP) for controller	BM4-O-PLC-XX (SPS)
A	X	-	-	o	o	o	-	o	-	-	-	-	-	-	-	-
B	-	X	-	o	o	o	-	X	-	-	-	-	-	-	-	-
C	-	-	-	o	o	o	X	-	-	-	-	-	-	-	-	-
D	-	-	-	X	X	X	-	-	-	-	-	-	-	-	-	-
E	-	-	F	-	-	-	-	-	-	-	-	-	-	-	-	-
F	Controller unit with RS232- or Ethernet interface															
G	-	-	-	-	-	-	-	-	X	-	-	-	-	-	-	-
H	-	-	-	-	-	-	-	-	-	X	X	X	X	X	X	X

Steckkarten_ES_Rev02_e

- X:** preferred slot
- F:** permanently installed
- o:** possible slot, only the preferred slot is occupied
- not possible

**NOTE!**

Only 2 analog outputs can be parametrized or linked even more than one AIO module is available.

4.3.2 Type plate DIO/FIO-XX in ES controller

The type code of the **DIO/FIO-XX** is included in the type plate of the basic unit.

4.3.3 Type code DIO/FIO-XX in ES controller

The type code has the form:

BM4XXX - XXX - XXXXX[Ryy] - [XXXXXXXX] - [XXX] - XX.

Directly behind the type code is the version code

(- XXXX - X - XXX - XXX).

Only the shown section is valid for the **Digital IO module** in ES controller:

BM4XXX - XXX - XXXXX[Ryy] - [XXXXXXXX] - [XXX] - XX Device generation

BM4XXX - XXX - XXXXX[Ryy] - [X~~X~~XXXXX] - [XXX] - XX ES controller function module, position A

BM4XXX - XXX - XXXXX[Ryy] - [XX~~X~~XXX] - [XXX] - XX ES controller function module, position B

BM4XXX - XXX - XXXXX[Ryy] - [XXX~~X~~XX] - [XXX] - XX ES controller function module, position C

BM4XXX - XXX - XXXXX[Ryy] - [XXXX~~X~~X] - [XXX] - XX ES controller function module, position D

M Digital IO (4 x IN, 4 x OUT)	see	DIO-01
N fast Digital IO (4 x IN, 4 x OUT)	see	FIO-01
U Digital IO without PE connection (4 x IN, 4 x OUT)		DIO-11
V fast Digital IO without PE connection (4 x IN, 4 x OUT)	see	FIO-11

4.4 Display and operation elements

The encoder module provides neither operation nor display elements.

The LED H4 of the basic unit **b maXX BM4000** respectively the emulation of the LED in ProDrive displays all device errors, including the errors generated concerning the **Digital IO module**.

TRANSPORT AND PACKAGING

5.1 What to observe when transporting

For initial transport the **BM4-F-DIO/FIO-XX** for standard controller is packed at the manufacturer. If the device is to be further transported, ensure that the following conditions are met throughout the entire transport:

- Climate class 2 K 3 as per EN 60721-3-2
- Temperature range - 25 °C up to + 70 °C
- Vibration, shock, continuous shock class 2 M 1 as in EN 60721-3-2

5.2 Transport inspection

Upon receiving the delivered goods, immediately examine them for completeness and transport damage.

If there is outwardly visible transport damage, proceed as follows:

- Do not accept the delivery or conditionally accept it with reservations.
- Note the extent of the damage on the transport documents or on the delivery note of the transport agent.
- Immediately file a complaint with the freight carrier. Have the complaint confirmed in writing and immediately contact the responsible representative of Baumüller Nürnberg GmbH.

**NOTE!**

The device may not be operated if there is visible transport damage!

5.3 Unpacking

After having received the still packaged device:

- ▶ Avoid transport shocks and hard jolts, e.g. when putting an item down.

If no transport damage is visible:

- ▶ Open the packaging of the device.
- ▶ Verify the delivery scope based on the delivery note.

File a claim with the responsible Baumüller representative if the delivery is incomplete.



NOTE!

Claim each individual deficiency as soon as it has been detected. Damage claims can only be validly asserted within the claim registration period.

5.4 Disposal of the packaging

The packaging consists of cardboard, plastic, metal parts, corrugated cardboard and/or wood.

- ▶ When disposing of the packaging, comply with the national regulations.

6

MOUNTING

In this chapter we describe the mechanical mounting of the plug-in module **BM4-F-DIO/FIO-XX** for BM4400, BM4600, BM4700 with standard controller.



NOTE!

The **Digital IO module** are mounted stationary in the BM4400, BM4600, BM4700 with ES controller and cannot be changed, therefore no mounting is necessary!

6.1 Preparation of mounting

- Check the marking **DIO/FIO-XX**, whether the right plug-in module is available.

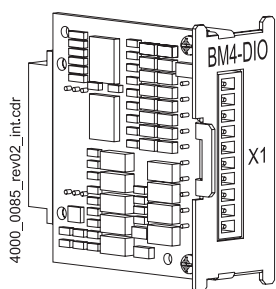


Figure 5: BM4-F-DIO/FIO-XX for standard controller

- Determine the suitable slot
(see ► [Slots BM4-F-DIO/FIO-XX for standard controller](#) on page 23).

6.2 Assembly



WARNING!

Danger as a result of faulty mounting!

The mounting requires qualified personnel with adequate experience. Faulty mounting can lead to life-threatening situations or substantial material damage.

Therefore:

- Only allow mounting to be performed by employees of the manufacturer or by other qualified personnel.

- 1 Switch off the **b maXX BM4000** and assure it against unintentional switching on during mounting.



DANGER!

Risk of fatal injury from electrical current!

There is an immediate risk of fatal injury if live electrical parts are contacted.

Therefore:

- Switch off the current when any kind of work is being performed on the electrical system and ensure safety before switching on again.
- Pay attention to the relevant safety instructions when handling electrical equipment carrying high voltages.
- Do not touch electrically live parts before taking into account the discharge time of the capacitors

- 2 Pull off the design cover towards the front from the controller unit
- 3 Look at the controller unit for the provided slot

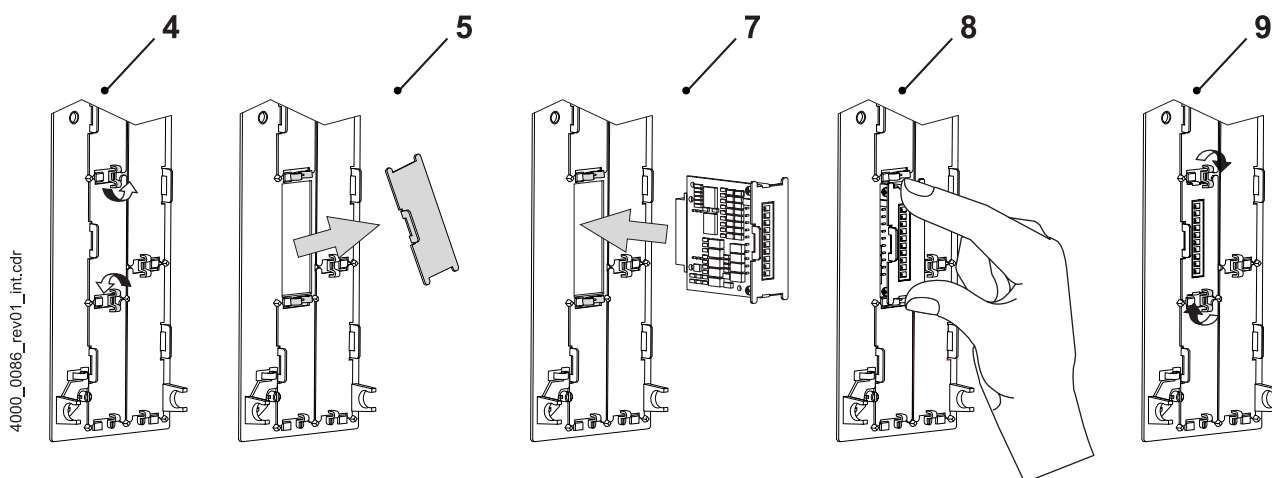


Figure 6: Mounting

- 4 Turn the twist lock beyond and beneath by 90°. The twist locks now are standing horizontally.
- 5 Take the front panel cover towards the front off. Keep this cover.

**NOTICE!**

Note **electrostatic discharge!**

The **BM4-F-DIO/FIO-XX** contains ESD sensible parts.

Therefore:

- Regard the described ESD procedures when handling the plug-in module.
- Touch the plug-in module only at its handle.

- 6 Take the **BM4-F-DIO/FIO-XX** out of its transport packing. Avoid the contact with electronically parts of the plug-in module.
- 7 Plug the **BM4-F-DIO/FIO-XX** module into the guide supports of the slot. The handle must point to the same side as the other handles in this slot strip (here: right side).
- 8 Press with two fingers on the front panel until the **BM4-F-DIO/FIO-XX** module within the device sensible latches tightly into the end position.
- 9 Turn the twist lock beyond and beneath by 90° into the vertical position (locking position).
- 10 Connect **BM4-F-DIO/FIO-XX** with digital signals via connector.
- 11 Put the design cover on the device again.

**NOTE**

If you, within the scope of a repair of the **BM4-F-DIO/FIO-XX**, simply displace it by a similar plug-in module, you can shorten the further operation, installation, commissioning and so on. Then you simply must put on the connector to the plug-in module, put on the design cover again and you can turn on the device again.

Thus the mounting of the **BM4-F-DIO/FIO-XX** is completed.

INSTALLATION

In this chapter we describe the electrical installation of the **DIO/FIO-XX** or **BM4-F-DIO/FIO-XX**. The mechanical mounting is described in [▶Mounting◀](#) from page 33 and not necessary with BM4400 ES, BM4600 ES and BM4700 ES.

7.1 Safety notes



DANGER!

Risk of fatal injury from electrical current!

There is an immediate risk of fatal injury if live electrical parts are contacted.
Therefore:

- Switch off the current when any kind of work is being performed on the electrical system and ensure safety before switching on again.
- Pay attention to the relevant safety instructions when handling electrical equipment carrying high voltages.
- Do not touch electrically live parts before taking into account the discharge time of the capacitors



WARNING!

Danger because of faulty installation and initial commissioning!

Installation and commissioning require qualified personnel with adequate experience. A installation fault can cause danger situations or large damage of property.

Therefore:

- Only personnel from manufacturer or qualified personnel operate while installation and initial commissioning

7.2 Requirements on the electrical connection

7.2 Requirements on the electrical connection



NOTICE!

The danger is: **Electricity.**

In case you do not ensure the requirements to the electrical connection of the **Digital IO module**, the **DIO/FIO-XX** or **BM4-F-DIO/FIO-XX** can be damaged/destroyed.

- Ensure that the electrical power connection parameters as specified in the technical data are adhered to and that the connections are made in accordance with the instructions.
- Avoid short circuit between input points and output points. In the event of a short circuit between input points and output points the **DIO/FIO-XX** or **BM4-F-DIO/FIO-XX** may get destroyed.



NOTE!

Pay attention to EMC compatible cabling, see instruction handbook **b maXX** BM4400, BM4400 ES, BM4600, BM4600 ES, BM4700, BM4700 ES (5.12008), chapter [Installation requirements with regard to EMC](#).

7.3 Requirements for the connection cables

Following cables are authorized for use by Baumüller:

- Copper cable with cross-section of min. 0,75 mm²

Max. cross section	Type of connection
1,5 mm ²	Connector, 10-pole

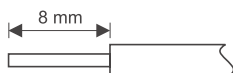


Figure 7: Remove insulation

4000_0288_rev01_int.cdr

7.4 Connection diagrams

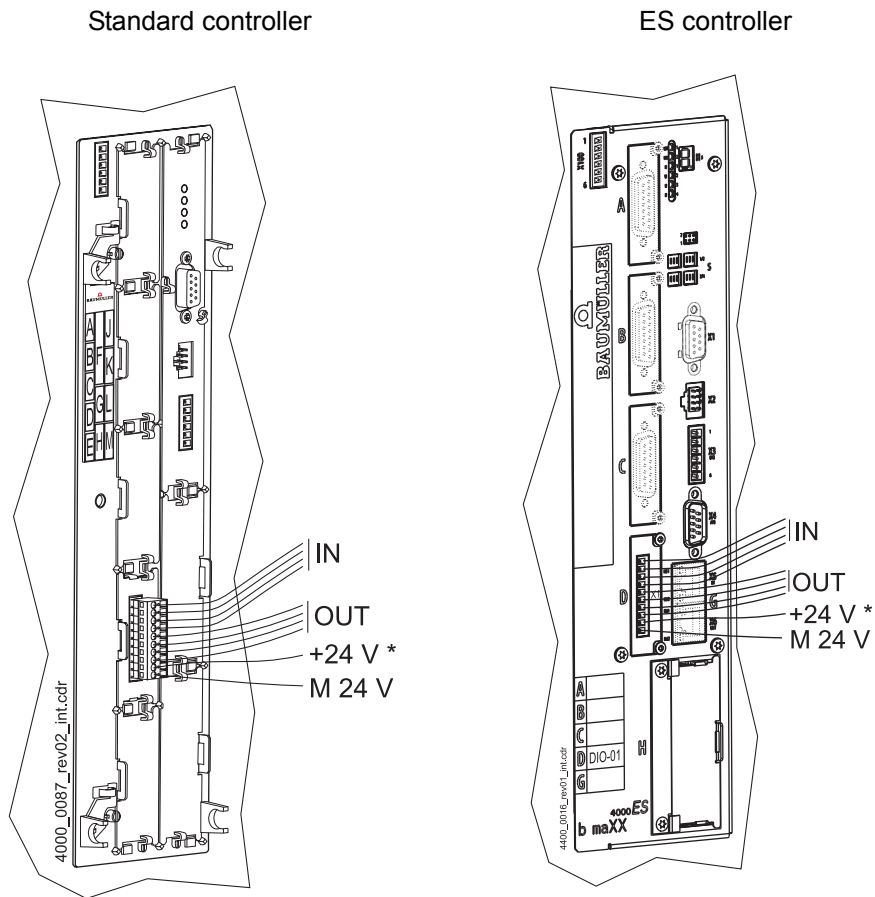
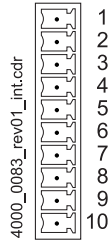


Figure 8: Connection diagram Digital IO module

7.4 Connection diagrams

Pin assignment



plug connector 10-pole

Pin No.	Assignment
1	IN 1
2	IN 2
3	IN 3
4	IN 4
5	OUT 1
6	OUT 2
7	OUT 3
8	OUT 4
9	+24 V *)
10	M 24 V



NOTE!

*) limit the current to 2.5 A. (due to this also UL 508 C with a maximum current of 4 A will be considered.)

7.5 Installation procedure

- 1 Switch off the b maXX 4400 device and assure it against unintentional switching on during mounting.



DANGER!

Risk of fatal injury from electrical current!

There is an immediate risk of fatal injury if live electrical parts are contacted. Therefore:

- Switch off the current when any kind of work is being performed on the electrical system and ensure safety before switching on again.
- Pay attention to the relevant safety instructions when handling electrical equipment carrying high voltages.
- Do not touch electrically live parts before taking into account the discharge time of the capacitors

The connection cable for the **Digital IO module** must be made by the user, see [►Requirements for the connection cables◄](#) on page 38.

- 2 Take off the cover from the controller unit (standard controller, only), the **Digital IO module** is in the slot D (preferred slot) or on one of the alternative slots A-E
- 3 Pull the 10-pole connector out of the bush button of the **Digital IO module**
- 4 Connect the (connecting) cable to this connector
- 5 Mount the plug again (cable going downwards)
- 6 Replace the cover again, if necessary.
- 7 Laying of the cable in the control cabinet, refer to [►Requirements on the electrical connection◄](#) on page 38.

7.6 Internal circuit diagram Digital IO module

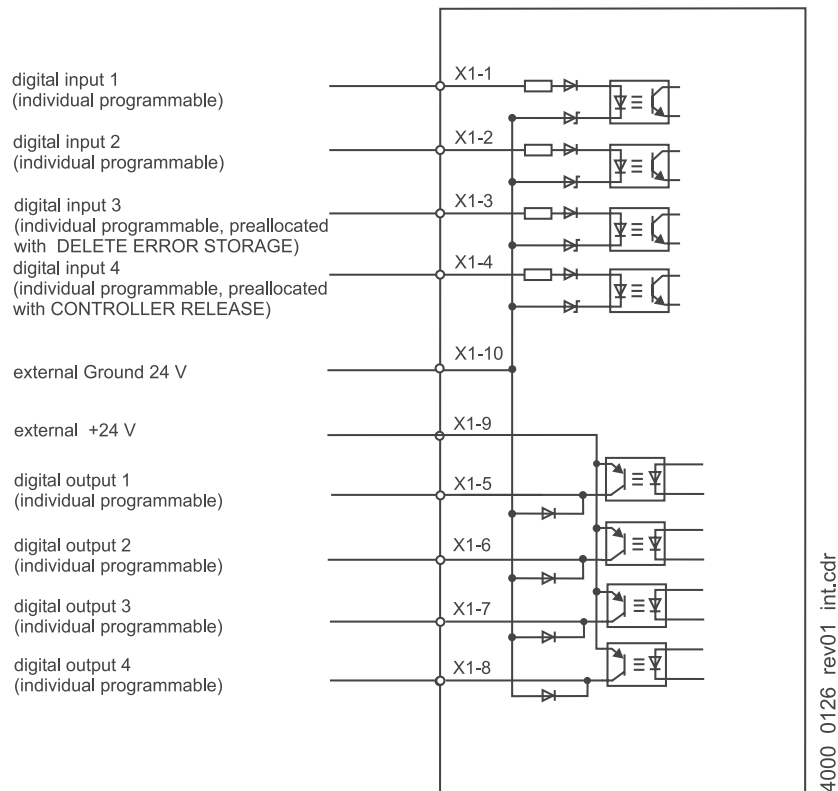


Figure 9: Internal circuit of Digital IO module

COMMISSIONING/OPERATION

This commissioning assures, that the **DIO/FIO-XX** or **BM4-F-DIO/FIO-XX** has been correctly recognized. Further information relating to commissioning and parameter settings of the encoder module can be found in parameter manual **b maXX 4000** 5.03039.

Assure, that before commissioning the following preconditions are fulfilled:

- 1 The **BM4-F-DIO/FIO-XX** is correctly mounted (standard controller only).
- 2 **DIO/FIO-XX** or **BM4-F-DIO/FIO-XX** is correctly installed
 - The digital inputs and outputs must be correctly cabled.
 - The connection must be suitable to the electrical specification of the **DIO/FIO-XX** or **BM4-F-DIO/FIO-XX**.
- 3 The switching cabinet is properly closed and all safety devices are put into operation
- 4 The **b maXX 4000** is ready-for-use.

8.1 Safety notes

Basics



WARNING!

Risk of injury due to improper operation!

Improper operation can lead to severe personal injury or material damage.

Therefore:

- Perform all operational steps according to the details of these instruction handbook.
- Before beginning any work, ensure that all coverings and protective devices are installed and are functioning properly.
- The control cabinet in which the device is installed should be protected against contact with electrically live parts.
Keep all doors of the control cabinet closed during operation.

8.2 Procedure of the commissioning



NOTICE!

Environmental conditions that do not meet the requirements.

Environmental conditions that are non-compliant can lead to property damage.

Therefore:

- Ensure that the environmental conditions are kept compliant during operation (see instruction handbook **b maXX 4000**, operation conditions).



WARNING!

Risk of injury due to insufficient qualifications!

Inevitably, when operating this electrical device, certain parts of this device are energized with hazardous voltage. Improper handling can lead to significant personal injury and material damage.

Therefore:

- Only qualified personnel may work on this device!

8.2 Procedure of the commissioning

The test-commissioning is divided into the following sections:

- 1 Recognition of the **DIO/FIO-XX** or **BM4-F-DIO/FIO-XX**.
- 2 Function test

8.2.1 Recognition of the Digital IO module

While starting, the control unit reads the identification of the **Digital IO module** automatically.

After that, check with the help of ProDrive, whether the **Digital IO module** has been correctly recognized:

- 1 Switch on the **b maXX 4000**
- 2 Wait till the system has started

Eliminate any errors / error messages eventually existing in the **b maXX 4000**.

These errors might have been caused by faulty assembly (e.g. defective cable) or some mistake(s) in installation (e.g. supply voltage absent). Only after having corrected the errors the commissioning can be continued.

3 Open with ProDrive the window „Diagnosis“.

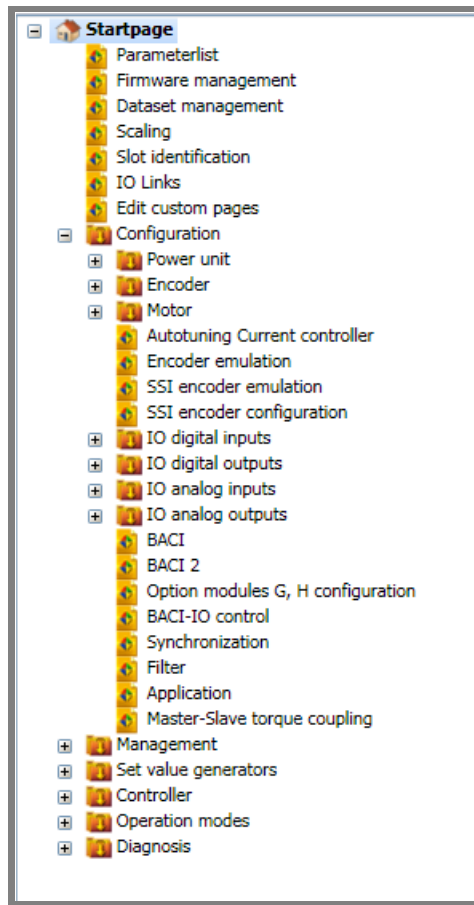


Figure 10: ProDrive navigation

8.2 Procedure of the commissioning

- Choose submenu „Service“
This window shows the position/slot of the recognized **Digital IO module**.
If the **Digital IO module** is available in position/slot D, then the following is displayed:
„Slot D Digital IO 4 Input, 4 Output Version X“.
„X“ shows the version of the module.
- Decide on the basis of the display.

ProDrive - Service - b maXX 4400

Database
Version: V168 (312)

Informations
Controller type: 3
Controller firmware type: 1223
Controller firmware ID: 1392
Controller Firmware version: 3.12
Parameter table version: 168
Controller FPGA version: 0x5C22
Controller bootloader version: 3.04

Configuration
Configuration ID: 0
Drive name: []

Password
Password for service mode: []

Time informations
System time: set PC time 0:01
Time since last boot: 0 days 0:01
Power time: 0 days 0:01

Functionmodules

Slot	Module name	Module type	Hardware version	Wire break supervisi	RS-485	Temp-acquis.
Slot A	SinCos EnDat 2.1	BM4-F-ENC-05	Version C	-	+	+
Slot B	Resolver	BM4-F-ENC-21	Version A	-	-	+
Slot C	not used			-	-	-
Slot D	Digital I/O 16 4 Input, 4 Output	BM4-F-DIO-01/11	Version B	-	-	-
Slot E				-	-	-

Figure 11: ProDrive Service

- If the **Digital IO module** has been correctly recognized, the commissioning can be continued, refer to Instruction Handbook b maXX 4000, 5.12008 or Parameter Manual b maXX 4000, 5.03039.
 - If the **Digital IO module** has not been correctly recognized, turn off the device, check the mounting and the installation. After removing all errors, switch on the device again.
 - If the **Digital IO module** has not been correctly recognized again, it is defect or the controller/controller slot (of standard controller) is defect. Contact Baumüller Nürnberg GmbH for replacement.
- Icon „ProDrive Navigation“

7 Configuration / submenu „IO digital inputs“

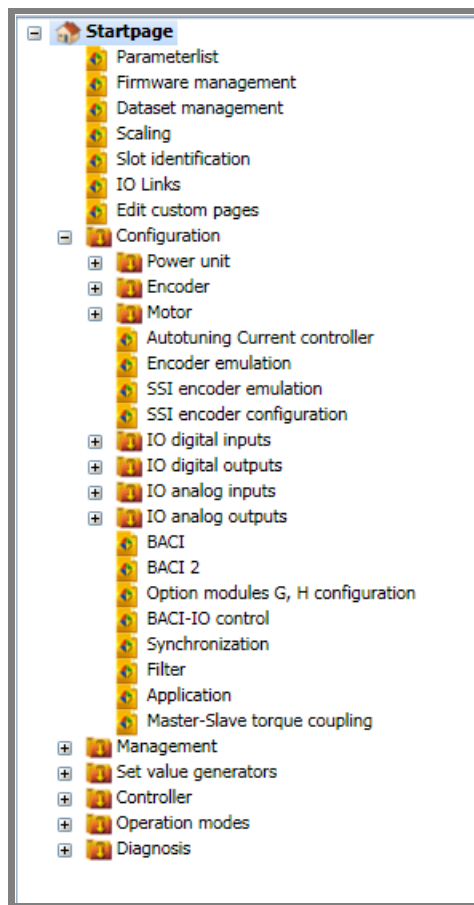


Figure 12: ProDrive navigation, submenu „IO digital inputs“

8 The submenu contains „Digital input link 1 - 4“
e.g. choose „Digital input link 2“.

The window „Digital input link 2“ is opened. The inputs can be selected in the center of the window.

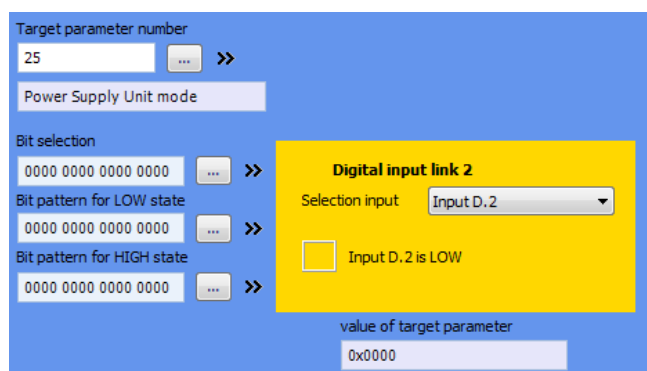
9 Choose in drop-down menu „Selection input“ the „input D.2“ if the **Digital IO module** is used in position **D**.

Figure 13: Selection „input D.2“

- 10 Check whether the text: „**module not existent**“ is displayed. In this case, the module was not recognized.

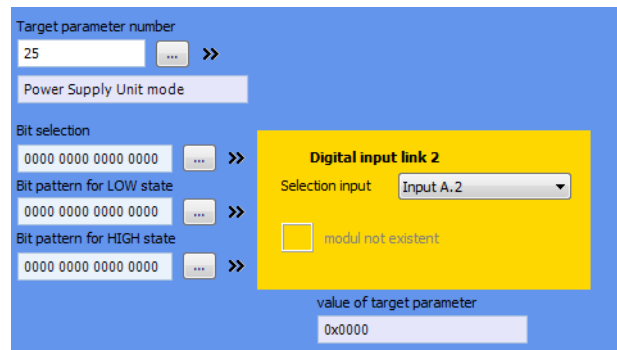


Figure 14: Module not existent

- Only if there is **no** message under the scale, the **Digital IO module** is recognized properly and can be used.
- If the **Digital IO module** is not recognized, then switch off the device and check the assembly/installation. After having removed all errors, restart the device for checking whether the plug-in module gets recognized properly now.
- If the **Digital IO module** is not recognized yet, then it is defective or the controller/controller slot. In that case, contact Baumüller Nürnberg GmbH for replacement.
- Once the **Digital IO module** has been recognized properly following with [▶Testing of the Digital IO module◀](#) from page 49.



NOTICE!

Notice electrostatic discharge

The **Digital IO module** or the **b maXX 4000** may get damaged if the module is plugged or pulled out when the **b maXX 4000** is energized.

If the plug-in module has still to be pulled out from the **b maXX 4000** due to an external action, switch off the **b maXX 4000**.

Try then to push in the **BM4-F-DIO/FIO-XX** again as described in the chapter [▶Mounting◀](#) from page 33 and [▶Installation◀](#) from page 37.

8.2.2 Testing of the Digital IO module

Once the plug-in module has been recognized properly, then it can be checked whether the input and outputs are working correctly using ProDrive.

Pre-conditions Basic unit **b maXX 4000** has been commissioned,
BM4-F-DIO/FIO-XX has been plugged in or **DIO/FIO-XX** is available (ES controller).
 Digital connections are available/connected and ready for use (pin assignment see [►Connection diagrams◄](#) on page 39)
 Voltage +24 V_{DC} (switchable) available on input 2.

- ProDrive navigation „Diagnosis“, submenu „Service“.
- In menu „Service“ is displayed whether the **Digital IO module** was recognized properly. e.g. in line for **slot D**.

Testing the inputs 1 ProDrive navigation „IO digital inputs“.
 2 Select in ProDrive „Digital input link 2“.

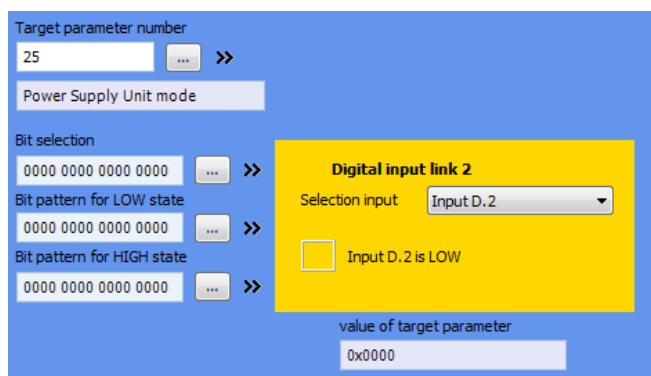


Figure 15: Menu „Digital input link 2“

- 3 In this window, select the input point by the side of the selection „Input D.2“, when the plug-in module is plugged in the slot D
- 4 Observe the replica of the LED and the text lying by its side „Input D.2 is low“.
- 5 In the window „Digital input link 2“, click on „...“ symbol by the side of „target parameter number“.

A new window „IOs target parameter DI“.

- 6 From the list for selection of parameters, select „1000 = stipulated operating mode and confirm with Ok.

The window gets closed again and the field under „target parameter number“ in the window „Digital input link 2 „ contains now the value „1000“.

- 7 In the window „Digital input link 2“, you click the „...“ symbol by „bit selection“, in the window which appears now you enter with the value „&hFFFF“ and Ok.

The window closes again and the field under „bit selection“ in the window „Digital input link 2“ now contains the value „FFFF“.

- 8** Below, next to „bit-pattern at low“ click on the “...” symbol and enter with the value „&hFFFD“ and Ok in the window which appears.

The window closes again and the field under „bit pattern at low“ in the window „Digital input link 2“ now contains the value „FFFD“.


- 9** Below that, next to „bit pattern at high“ click on the “...” symbol and enter with the value „&h0001“ and Ok in the window which appears.

The window closes again and the field under „bit pattern at high“ in the window „Digital input link 2“ now contains the value „0001“.

With the help of the digital input 2, you can switch between the operating modes „speed control“ and „position control“. For this purpose, apply for example DC 24 V on the digital input 2 via usage of a switch for generating a HIGH - signal.

If the input signal alternates between low and high, the controller overwrites the value of the high mask (associated with bit-selection mask) on the target parameter, i.e. the value 0001 on the parameter 1000. This results in the controller switching to the operating mode „position control“. When the input signal alternates (like this) from high to low, then the controller overwrites the value of the Low-Mask (associated with bit-selection mask) on the target parameter i.e. the value FFFD (corresponding to -3 decimal) on the parameter 1000. This results in the controller setting the operating mode „speed control“.

Verify the change from one operating mode to another in the menu „Management/Drive Management“.

- 10** In the Icon bar, click on the button Drive manager-dialog .

Observe the switching over between the operating modes displayed, when you are alternating between HIGH- and LOW-signals at the digital input.

- 11** Repeat the above steps for the inputs 1, 3 and 4, i.e. the menus „digital inputs 1, 3 and 4“

After having tested the digital inputs with successful results, turn now to the outputs.

Testing the outputs

We try for instance to execute the function at the digital output 1 (= Digital output link 1).

- 1 ProDrive navigation „IO digital outputs“.
- 2 In the project tree:
„Device/configuration/IO digital outputs/digital output link 2“.
- 3 In the window „Digital output link 2“, by the side of „Selection output“, select „output D.2“ from the list, when the plug-in module is plugged in the slot D.

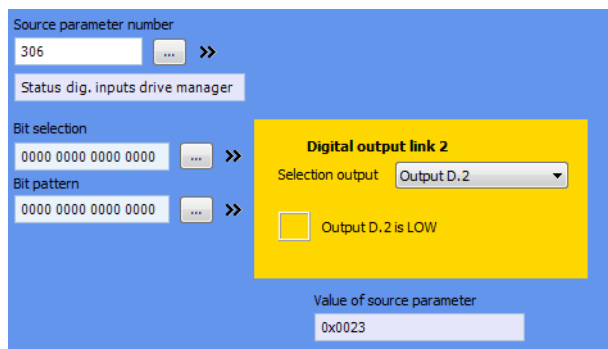


Figure 16: Menu „Digital output link 2“

- 4 Observe the replica of the LED and the text „Output D.2 is low“ located by its side.
- 5 In the window „Digital output link 2“, click on the „...“-symbol, by the side of „source parameter number“.

„IOs source parameter DO“ is opened in the window.


- 6 As in case of testing the digital input, select the source parameter „1000 stipulated operating mode desired from the list of the source parameter numbers and confirm with Ok.

The window „IOs source parameter DO“ is closed.

- 7 In the window „Digital output link 2“, click on the „...“-symbol next to „bit-menu“ and enter with „&h0008“ and Ok in the window which appears.

The window closes again and the preset value 0000 under „Bit-pattern“ remains unchanged.

As described in case of testing the digital input, check now the change between HIGH-LOW in the drive-manager dialog:

- 8 In the icon bar, click on the button drive manager dialog 

A window „b2 drive manager dialog“ will open.

- 9 Switch over now the digital input from HIGH to LOW, which also results in generating a change over from HIGH to LOW by the parameter 1000 at the digital output via the link. This can be noticed by change over from the stipulated operating mode of regulation of rotational speed to „position control“.

- 10 Repeat the above steps for the „Digital output links 1, 3 and 4“.

This concludes the test commissioning of the **Digital IO module**.

MAINTENANCE

9.1 Safety notes

Basic information

**WARNING!****Risk of injury due to improperly performed maintenance work!**

Improper maintenance can lead to severe personal injury and material damage.

Therefore:

- Before beginning work, make sure that there is enough space for mounting.
- Make sure that the mounting area is kept clean and orderly. Parts and tools that are loosely stacked or lying around are a potential accident source.

9.2 Environmental condition

If the prescribed environmental conditions are adhered to, then the device is maintenance-free. For the prescribed environmental conditions see Instruction handbook **b maXX 4000**.

The most important prescribed environmental conditions are:

- Dust-free environmental air
- Temperature: Min. 5 °C to max. +55 °C
- Relative humidity: 5% to 85%, no condensation
- Installation altitude: From 1000 m and higher derating

9.3 Inspection intervals - maintenance notes

9.3 Inspection intervals - maintenance notes

Refer to Instruction handbook **b maXX 4000**, 5.12008.

9.4 Repairs

In case of device damage, please inform your sales office or:

Baumüller Nürnberg GmbH

Ostendstr. 80 - 90
90482 Nuremberg
Germany

Tel. +49 9 11 54 32 - 0
Fax: +49 9 11 54 32 - 1 30

Mail: mail@baumueller.de
Internet: www.baumueller.de

TROUBLESHOOTING AND FAULT CORRECTION

10.1 Behavior in case of malfunctions

Basic information

**DANGER!****Risk of fatal injury from electrical current!**

Inevitably, when operating this electrical device, certain parts of it are energized with hazardous voltage.

Therefore:

- Pay heed to areas on the device that could be dangerous.

**WARNING!****Risk of injury due to improper fault correction!**

Therefore:

- Only qualified personnel may work on this device!
- Personnel that work with the **b maXX** device must be trained in the safety regulations and the handling of the device, and be familiar with the correct operation of it. In particular, reacting to error indications and conditions requires that the operator must have special knowledge.

10.2 Fault detection

The fault can be caused by mechanical or electrical malfunctions.

LED H4

The occurrence of an error state of a device **b maXX 4000** is signalled by the lighting up of the red LED H4 on the front side of the housing.



NOTE!

If warnings or errors occur without error reaction the LED H4 „error“ *flashes*. Only error messages with error reaction are displayed *by constantly lighting up*.

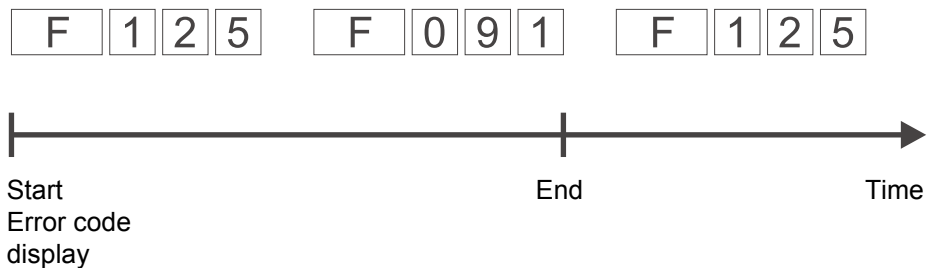
7-segment display

Additionally the error code is shown via the 7-segment display on the front side of the housing (not BM4XXX - XXX - XX0XX and BM4XXX - XXX - XX1XX).

By the displayed code the error message can be determined using [▶Error messages◀](#) from page 61. The displayed error is without exception an LEVEL 2 error (P0201 - P0216).

The display of an error code starts therewith, that „F“ is displayed for 1.5 s. Then the four characters of the error code are displayed. The separate characters are displayed for about 0.8 s, interrupted by a short break. If there are other errors, these are displayed in the same manner. The procedure is repeated as soon as all errors were displayed.

Example: Error 125 and 91 are generated:



4000_0366_rev01_int.cdr

Figure 17: Error messages 7-segment display

Operating software ProDrive

Furthermore the error message is shown in the operating software:

- Start the operating program ProDrive (from FW 3.07), if it isn't running yet.



NOTE!

The controller software version and the operating software version must be compatible to use ProDrive with all functions.

Display the „error message“ in ProDrive:

- Open navigation with click on + in front of „Management“

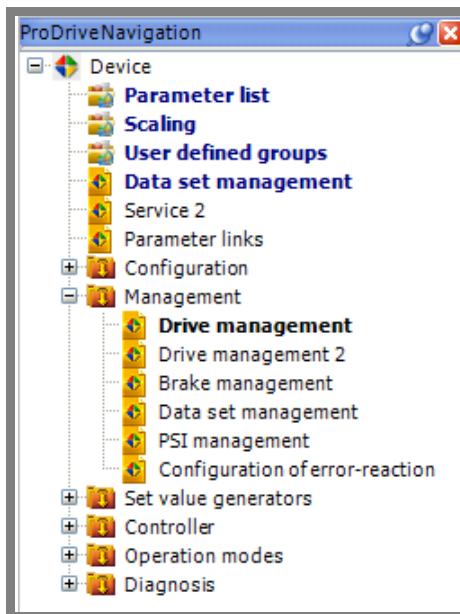


Figure 18: ProDrive navigation

► Select „Drive management“

The window „Drive manager“ opens, see below with an exemplary (error) message. Before the communication between controller and PC/laptop is started, the messages in this list have been arranged in numerical order. The newly occurring messages are added to the end of the list, when communication is active.

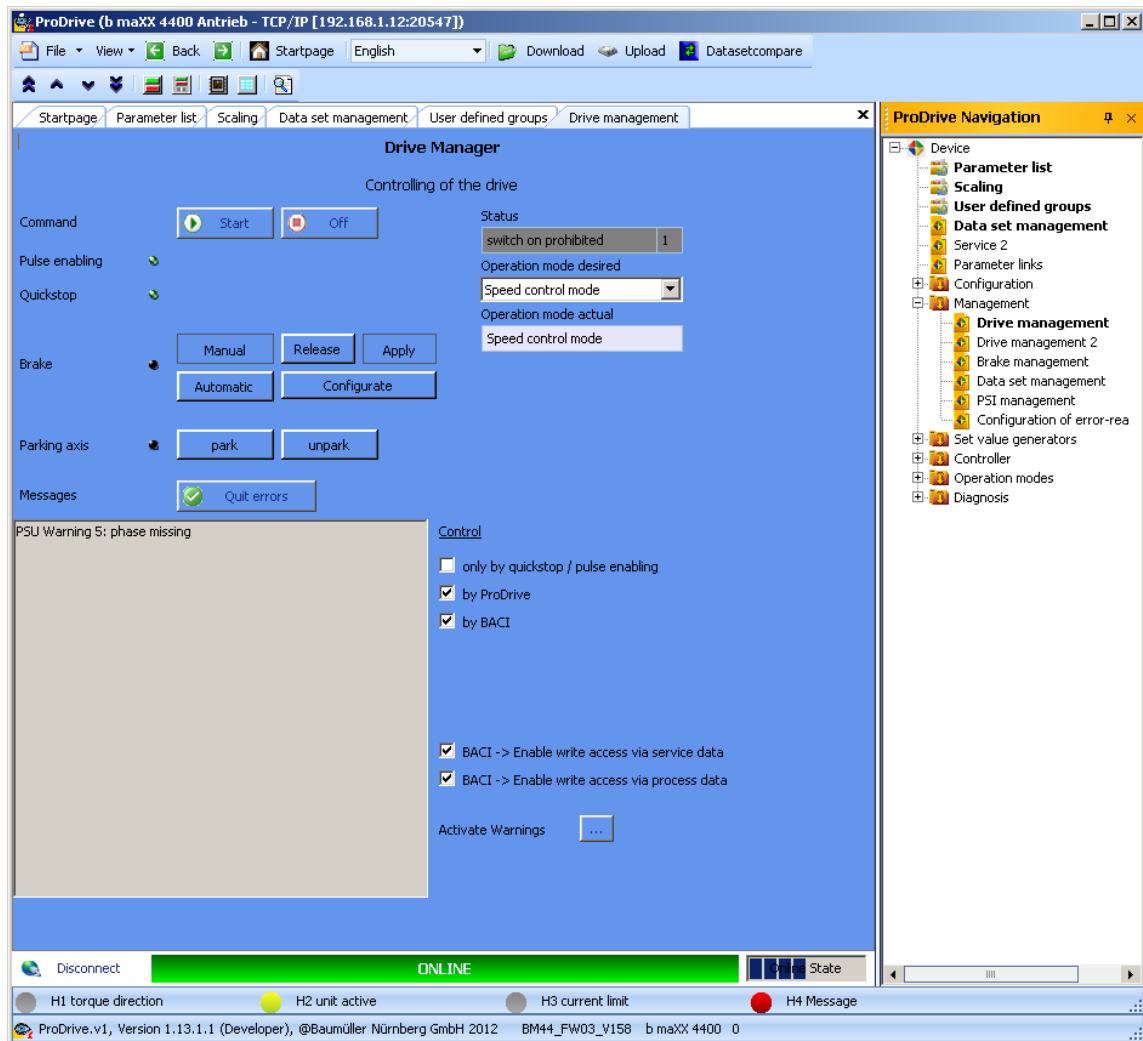


Figure 19: Drive manager ProDrive



NOTE

If you are not able to start the motor, although the red LED H4 isn't lighting up and although the LED H2 is lighting up green, check the parameterization of the **b maXX 4000** with the parameter list in ProDrive.

Error possibilities are e. g.: torque limit = 0 has been set or notch position is not correct (also see parameter manual **b maXX 4000**).

If no LEDs are lighting up on the front side of the device, check the 24V supply.

10.3 Error handling

The error messages in the system are built up hierarchically.

An error message can result from a beneath in the hierarchic arranged error message. This is why the message „Error“ (level 1) can base on an error, which e. g. has appeared in „ModuleError“ (level 2)., because there is a failure in „Function module1“ (level 3, e. g. sine cosine encoder module).

Error memory

From firmware V03.11 onwards an internal error memory exists to read out errors by a higher-level open-loop control. All occurring errors which lead to an error response of the drive are saved chronologically in this error memory.

A read access to the error memory is done element by element with an index parameter (P0258) and a value parameter (P0259).

The error memory will be deleted completely at error acknowledgment (Bit 7 = 1 in control word).

For a further description see parameter P0257 in the Parameter Manual.

Error display

If an error appears, the according definite error message is displayed within a short time in ProDrive in the menu „device manager‘ and on the 7-segment display.



NOTE!

The **b maXX 4000** is provided with predefined error reactions. You are able to set the error reaction of the device in „Depending on settings“ in the column „Reaction“ marked error messages. An exception here are errors, which have to have an immediate is as a consequence. These can not be changed due to safety reasons.

10.3.1 Error reset

If the red error LED is lighting up, there is at least one error.

There are several methods to reset errors:

- Via ProDrive (from FW 3.07):
Button “Quit errors” (either in the dialog box “Device manager” or on the page “Device manager”).
That means, that you inform the device, that you have noted the error, that you have removed it or that you want to pass over it. Due to error reset all error messages are reset. An individual error reset is not possible. The button Quit errors causes a resetting of the error, in case the cause for the error message exists no longer.

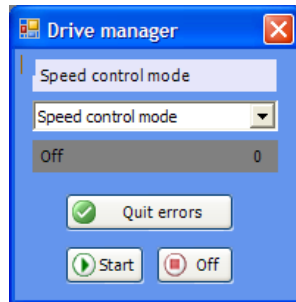
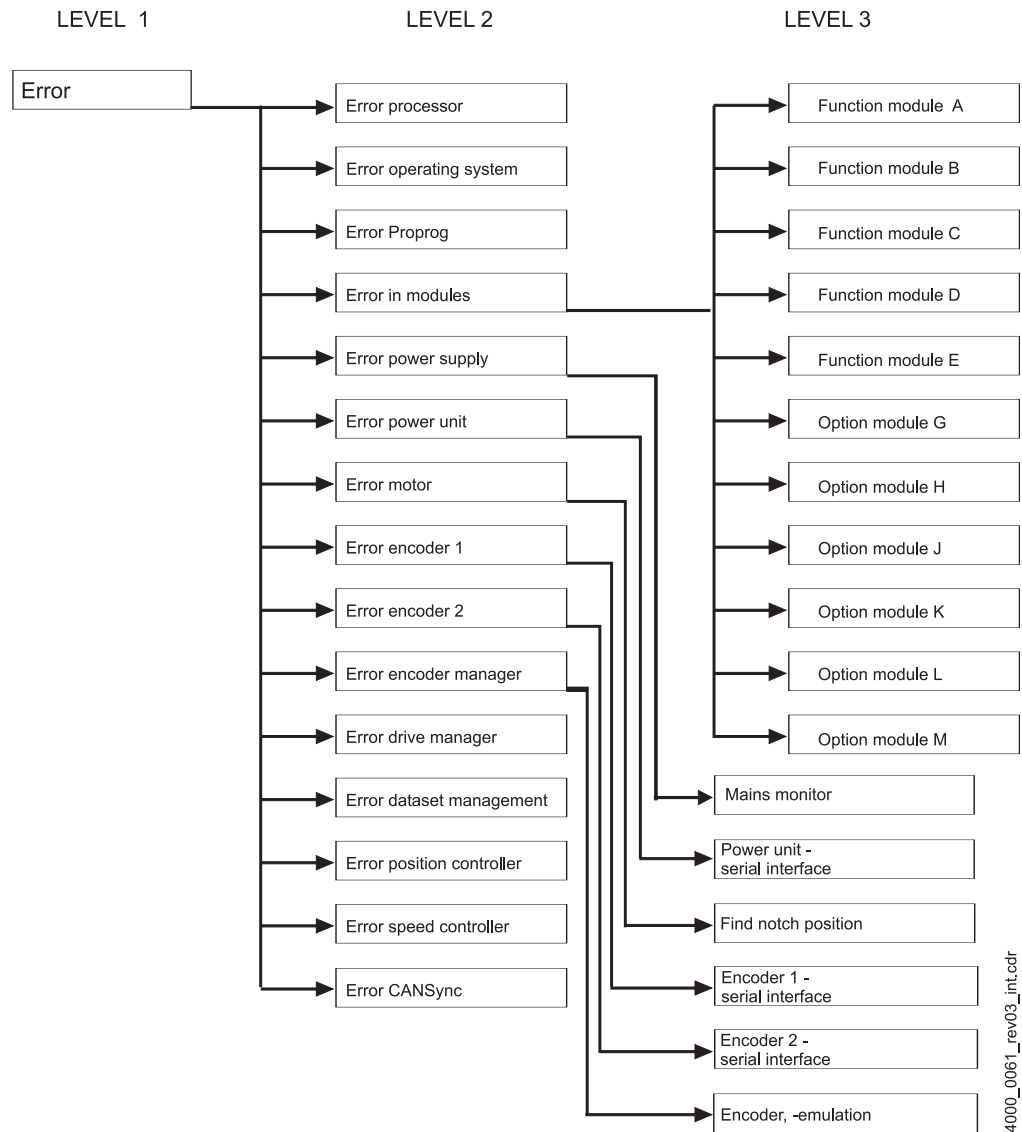


Figure 20: ProDrive Drive manager

- Via writing access to control word (P0300):
Here a rising edge must be generated in bit 7 (generated by the control system or by operating software via input to parameter list).
Note: The drive control must be active (see parameter P1001 Communication source) for the selected communication source.
- Via a digital input:
A digital input of a DIO module can be selected via parameter P0575 digital input for error acknowledgement can be selected for error reset. A rising edge on this input resets the error messages.
- Via the pulse enable input:
Precondition is, that the drive is only controlled via the hardware inputs (that means that the motor guide is neither set via the operating software nor via another communication source). Furthermore the option “Quit error via pulse enable” in parameter P1002 Options device manager must be active. With the first rising edge of pulse enable the errors then are reset. But the drive still does not start. Therefore you then need a second rising edge for the enable.

Additional data according the subject resetting of error messages is available in the „Parameter manual“.

10.3.2 Error messages




4000_0061_rev03_init.cdr

Figure 21: Survey error list

The (error) messages are displayed in ProDrive window „Drive manager“.

10.3 Error handling

- 1st level** 1st level errors are only interesting for the access to errors via parameters, to be used without ProDrive, e. g. at Field bus communication. This errors are not shown in ProDrive/ 7-segment display.
Bit mapping see description of the parameter P0200 in the parameter manual.
- 2nd level** Order of the error messages see survey ([►Abbildung 21◄](#) auf Seite 61).
- 3rd level** 2nd level error messages are displayed on the 7-segment display in ProDrive.

	<p>NOTE!</p> <p>3rd level errors are only displayed in ProDrive separated by a decimal point from the corresponding 2nd level error.</p> <p>e.g.:</p> <p>Motor error 102: Group error find notch position (2nd level)</p> <p>Find notch position error 102.64: Drive moved more than 4 times delta angle. (3rd level)</p>
---	--

In the column „Reaction“ the reaction of the system to the error is shown:

- „pulse stop“ = inhibit pulses
- „adjustable“ = the error reaction can be set via ProDrive (Window „Drive management“, toolbar button „Error reaction“).
- „no reaction“ means, the drive is continuing to work and the red error LED is blinking.

2nd level error messages

P0204 Error in function or option modules

Error No.	Meaning	Reaction	Troubleshooting
48	Error in function module A	3rd level error	see ►Error in function module A to E◄ auf Seite 63 (= 3rd level)
49	Error in function module B		
50	Error in function module C		
51	Error in function module D		
52	Error in function module E		

3rd level error messages



NOTE!

3rd level errors are only displayed in ProDrive separated by a decimal point from the corresponding 2nd level error (refer to [►Abbildung 21◄](#) auf Seite 61).

e.g.:

Motor error 102: Group error find notch position **(2nd level)**

Find notch position error 102.64: Drive moved more than 4 times delta angle. **(3rd level)**

P0240 to P0244 Error in function module A to E

Error No.	Meaning	Reaction	Troubleshooting
0	reserved error		
1	Module not identified	no reaction	Check if the right module is plugged at the right position
2	Identified module is not permitted at this position	no reaction	
3	Digital output short-circuited or 24V supply not connected to the DIO module	no reaction	Check the cabling of the digital outputs
4	Invalid target parameter value caused by digital input	no reaction	Check the parameterization of the input channel
5	Direct PLC-IO access for this module not permitted	no reaction	Don't select the module
6	Required module is missing, only for BM4100 active mains rectifier unit	IS	Connect the required module for operation with active mains rectifier - see operation handbook b maXX 4100 active mains rectifier unit
7	Module must not be used for actual active mains rectifier unit mode or controller mode	no reaction	
8	Reserved	no reaction	
9	Too much Analog IO modules connected	no reaction	More than 2 analog modules are not allowed
10	AIO-04: current < 4 mA	no reaction	Current source not connected, disconnection or short-circuit
11	AIO-04: current > 20 mA	no reaction	Current source impress too much current

11

DISPOSAL



NOTE!

Baumüller products are not subject to the scope of application of the EU's Waste Electrical and Electronic Equipment Directive (WEEE, 2002/96/EC). Hence, Baumüller is not obligated to bear any costs for taking back and disposing of old devices.

11.1 Safety notes



DANGER!

Risk of fatal injury from electrical current!

Stored electric charge.

Discharge time of the system = discharge time of the device with the longest DC link discharge time in the DC link connection.

Refer to Instruction handbook **b maXX 4000**, Electrical data.

Therefore:

- Do not touch before taking into account the discharge time of the capacitors and electrically live parts.
- Heed corresponding notes on the equipment.
- If additional capacitors are connected to the DC link, the DC link discharge can take a much longer time. In this case, the necessary waiting period must be determined or a measurement made as to whether the equipment is de-energized. This discharge time must be posted, together with an IEC 60417-5036 (2002-10) warning symbol, on a clearly visible location of the control cabinet.



NOTICE!

Avoid polluting the environment as a result of improper disposal.

Therefore:

- Only dispose in compliance with the health and safety regulations.
- Take heed of any special local regulations. If you are unable to directly ensure safe disposal yourself, commission a suitable disposal contractor.
- In the event of a fire, hazardous substances could possibly be generated or released.
- Do not expose electronic components to high temperatures.
- Beryllium oxide is used as inner insulation, for example for various power semiconductors. The beryllium dust that is generated upon opening is injurious to the health.

Do not open electronic components.

- Dispose of capacitors, semiconductor modules and electronic scrap as special waste.



WARNING!

Danger as a result of faulty deinstallation!

The deinstallation and disposal requires qualified personnel with adequate experience.

Therefore:

- Only allow deinstallation and disposal to be performed by qualified personnel.

11.2 Disposal facilities/authorities

Ensure that the disposal is handled in compliance with the disposal policies of your company, as well as with all national regulations of the responsible disposal facilities and authorities. In case of doubt, consult the bureau of commerce or environmental protection authority responsible for your company.



APPENDIX A - DECLARATION OF CONFORMITY



EG - Declaration of Conformity

Doc.-No: 5.14002.00
Date: 12-Mar-2014

according to EMC Directive 2004/108/EC and Low Voltage Directive 2006/95/EC

The Manufacturer: Baumüller Nürnberg GmbH
 Ostendstraße 80-90
 90482 Nuremberg, Deutschland

declares that the product:

Name: b maXX
 Type: Digital IO module b maXX BM4000 standard controller
 BM4-F-DIO-01, BM4-F-DIO-11, BM4-F-FIO-01, BM4-F-FIO-11
 From manufacturing date: 01-May-2005

as developed, designed and manufactured in accordance with the EMC Directive 2004/108/EC and the Low Voltage Directive 2006/95/EC.

Applied harmonized standards:

Standard	Title
DIN EN 62061:2010-05	Safety of Machinery - Functional safety of safety-related electrical, electronic and programmable electronic control systems
DIN EN 61800-5-1:2008-04	Variable-speed electrical power drives- Part 5-1: Safety requirements - Electrical, thermal and energy
DIN EN 61800-5-2:2008-04	Variable-speed electrical power drives Part 5-2 Safety requirements - Functional
DIN EN 61800-3:2005-07	Variable-speed electrical power drives Part 3: EMC-requirements and specific test methods

The listed devices cannot be operated without a basic controller unit. The compliance to the guidelines require a correct assembly of the products and the careful attention of the associated instruction handbooks of BM4000 and of BM4-F-DIO/FIO-XX digital IO module.

The compliance to the above mentioned guidelines are checked on the basis of typical BM4000 controller configurations.

Nürnberg / 12-Mar-2014
 Place / Date

The content of the Declaration of Conformity is subject to change. The current version can be obtained on request.



Table of Figures

b maXX BM4000)	21
Digital IO module for standard controller.....	23
Type plate BM4-F-DIO/FIO-XX for standard controller.....	25
DIO/FIO-XX in ES controller	27
BM4-F-DIO/FIO-XX for standard controller.....	33
Mounting	34
Remove insulation.....	38
Connection diagram Digital IO module	39
Internal circuit of Digital IO module	42
ProDrive navigation.....	45
ProDrive Service	46
ProDrive navigation, submenu „IO digital inputs“	47
Selection „input D.2“	47
Module not existent	48
Menu „Digital input link 2“.....	49
Menu „Digital output link 2“	51
Error messages 7-segment display.....	56
ProDrive navigation.....	57
Drive manager ProDrive.....	58
ProDrive Drive manager.....	60
Survey error list.....	61



Table of Figures



Index

A		K	
Accidents	16	Key to symbols	6
Assembly	34		
C		L	
Caution	6	LED H2	58
Connecting cables, requirements	38	LED H4	58
Current consumption	19	Limitation of liability	7
Customer service	8		
D		M	
Danger	6	Maintenance	53
Danger areas	26	Malfunctions, behavior	55
DC link discharge time	14, 65	Modifications	11
Design cover	34		
Diagnosis	45	N	
Discharge, electrostatic	35	Note	6
Disposal	8, 65		
Drive management	58	O	
E		Operating instructions, contents	11
Electrical connection, requirements	38	Operating personnel	13
Electrical current, dangers of	14	Operation	43
Error	61	Option modules	23
Error handling	59		
Error messages	61	P	
ES controller	21	Packaging, disposal of	32
F		Parameter list	58
Fault correction	55	Parameterization	58
Fault detection	56	Personnel, qualified	13
Fire fighting	15	Personnel, training	13
Function modules	23	Pin assignment	40
G		Possible	24
Guarantee provisions	8	Procedure of commissioning	44
H		ProDrive	49, 58
Hazardous situations	16	R	
Hazards, special	14	Recognition of encoder module	44
I		Repairs	54
Inspection	54	Residual energy, danger from	14
Inspection intervals	54	S	
Installation	37	Safety equipment	16
Installation, procedure	41	Signs and labels	17
		Spare parts	8
		Standard controller	21



Index

T

Technical data	19
Temperature range	20
Testing the inputs	49
Testing the outputs	51
Transport inspection	31
Troubleshooting	55
Twist lock	35
Type code	26
ES controller	29
Type of plug-in module	26
Type plate	
ES controller	29
Standard controller	25

U

Unpacking	32
Use, compliant with indented purpose	12

W

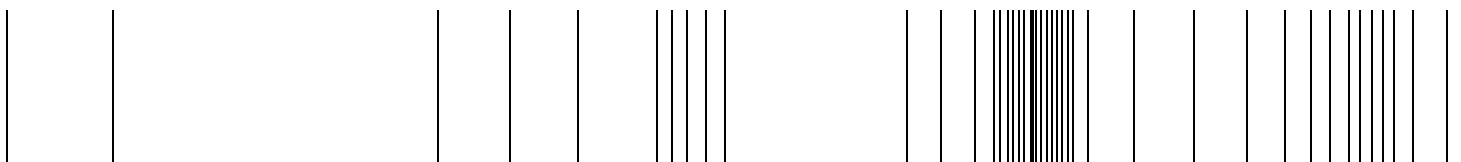
Warning	6
Warning notes	6



Overview of Revisions

Version	Status	Changes
5.01046.06	11-Nov-2014	Revision because of ES controller

be in motion



Baumüller Nürnberg GmbH Ostendstraße 80-90 90482 Nürnberg T: +49(0)911-5432-0 F: +49(0)911-5432-130 www.baumueller.de

All information given in this manual is customer information, subject to change without notice. We reserve the right to further develop and actualize our products continuously using our permanent revision service. Please notice, that specifications/data/information are current values according to the printing date. These statements are not legally binding according to the measurement, computation and calculations. Before you make any information given in this manual to the basis of your own calculations and/or applications, please make sure that you have the latest edition of the information in hand. No liability can be accepted concerning the correctness of the information.