



# BAUMÜLLER

## Instruction manual 3-AxisFlex

### Short description:

Installation instructions for the 3-AxisFlex machine template.

**Version:** 1.3 from 2021/08/02

**Status:** release

**Autor:** [VT]

## 1. Content

2.	History.....	3
3.	Introduction.....	3
4.	Definitions.....	3
5.	Requirements.....	4
5.1	Development system.....	4
5.2	Controller system.....	4
6.	Safety related notes.....	5
7.	Setup.....	6
7.1	Setting up the development system.....	6
7.2	Setting up the controller system.....	11
8.	List of illustrations.....	16

## 2. History

Version	Date	Name	Change
1.0	2019/11/14	VT	Initial Version
1.1	2020/02/04	VT	SCADA Web Server directory corrected
1.2	2020/02/21	VT	General revision / update
1.3	2021/07/26	VT	Complete revision

## 3. Introduction

This document describes the necessary steps to set up the machine template 3-AxisFlex on a development and controller system.

## 4. Definitions

Term	Definition
PLC	Programmable logic controller
SP	Service pack

## 5. Requirements


### 5.1 Development system


Description	Version
Microsoft Windows 10	ab V20H2
ProMaster Engineering Framework	ab V1.21.1.34
SCADA Editor	ab V7.02.00.20


### 5.2 Controller system


Description	Version
Baumüller PLCmc	ab Image V3.1.1.0


## 6. Safety related notes

DANGER	
	<p>... indicates an imminently dangerous situation that will result in death or serious injury if not avoided.</p>

WARNING	
	<p>... warns of a potentially dangerous situation that can lead in death or serious injury if it is not avoided.</p>


ATTENTION	
	<p>... warns of a potentially dangerous situation that can lead to minor or slight injuries if it is not avoided.</p>

NOTICE	
	<p>... warns of a potentially dangerous situation that can lead in material damage if it is not avoided.</p>

Note!	
	<p>... points out useful tips and recommendations as well as information for efficient, trouble-free operation.</p>

## 7. Setup

The setup wizard automatically detects whether the system is a development or controller system and selects the appropriate components.

Note!	
	<p>Any development software required for editing is not included in this setup package and must be purchased separately.</p>

### 7.1 Setting up the development system

For the process of further software development, the required components must be copied to the development system. These include the ProMaster project and the documentation for the software template 3-AxisFlex.

Step 1 - Copy the setup package to any directory

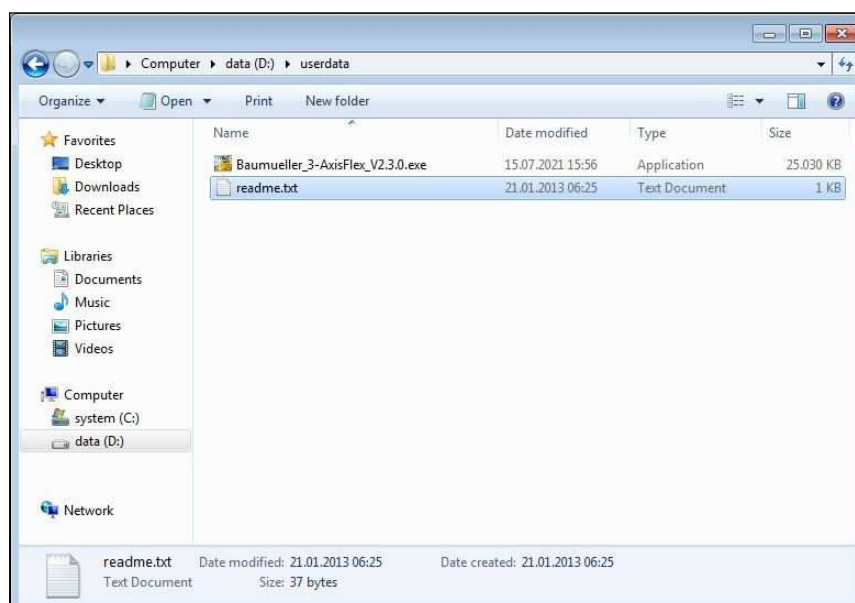


Illustration 1 - Setup package on the development system

Step 2 - Start setup by double-clicking and follow the instructions of the setup wizard

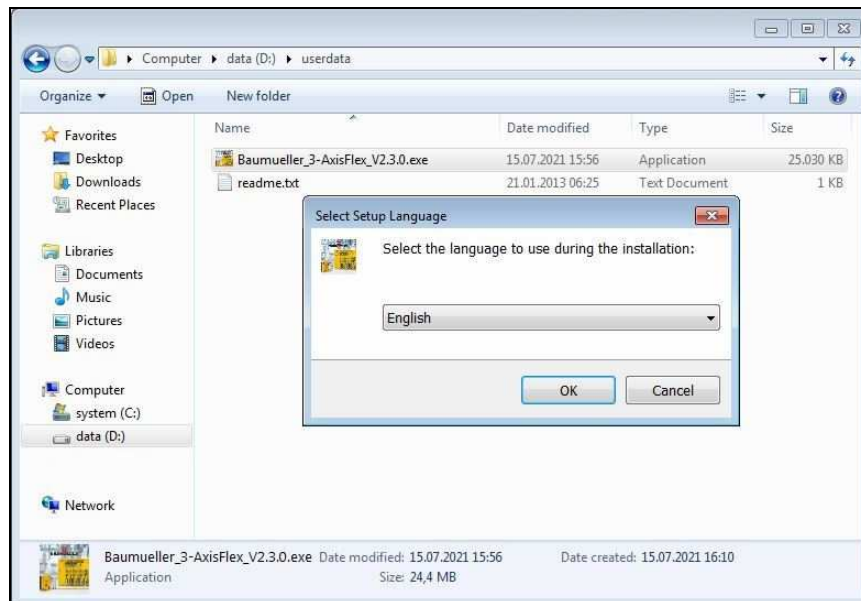


Illustration 2 - Setup on the development system - Language selection

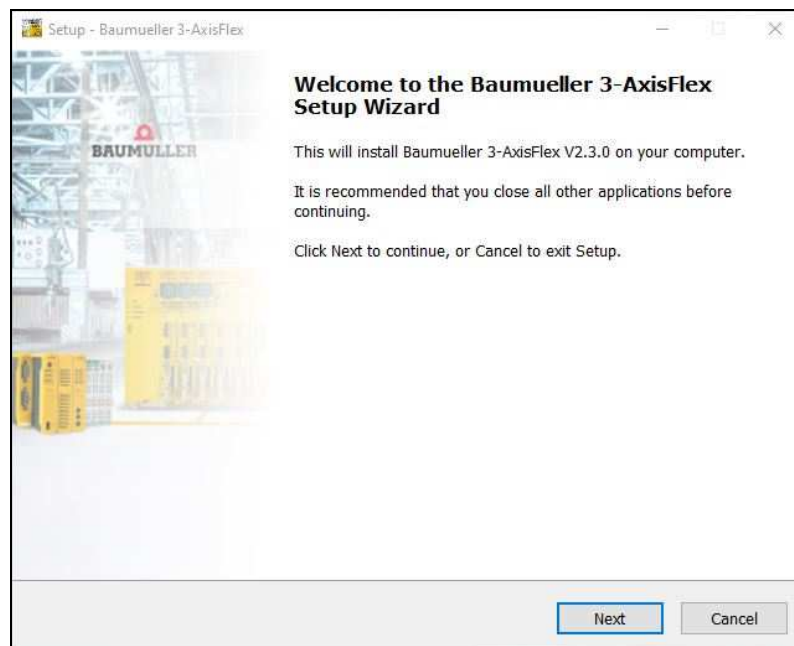


Illustration 3 - Setup on the development system

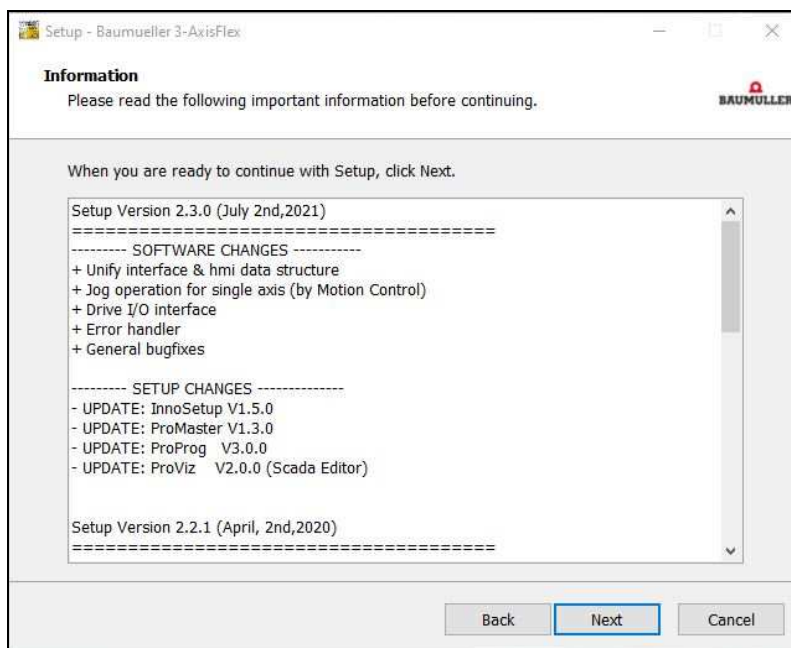


Illustration 4 - Setup on the development system – History

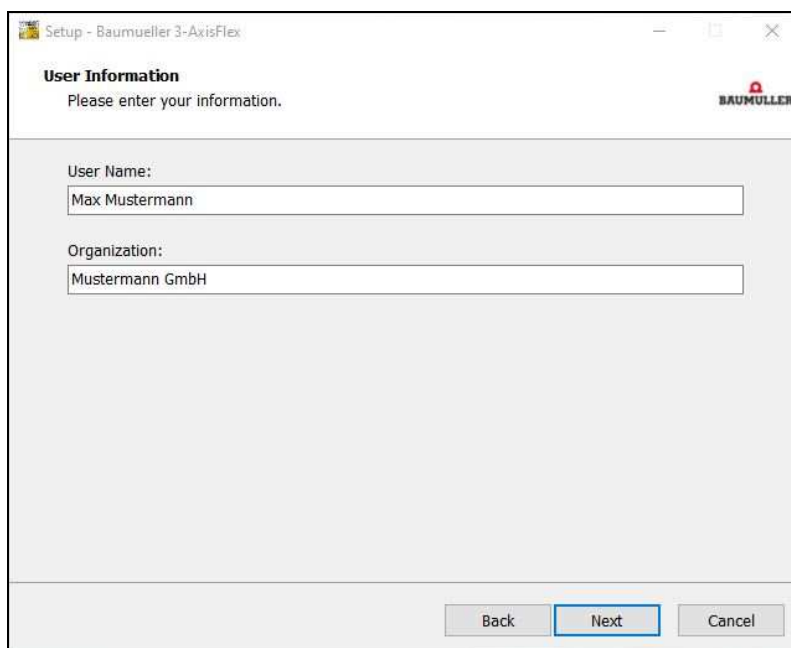


Illustration 5 - Setup on the development system - User information



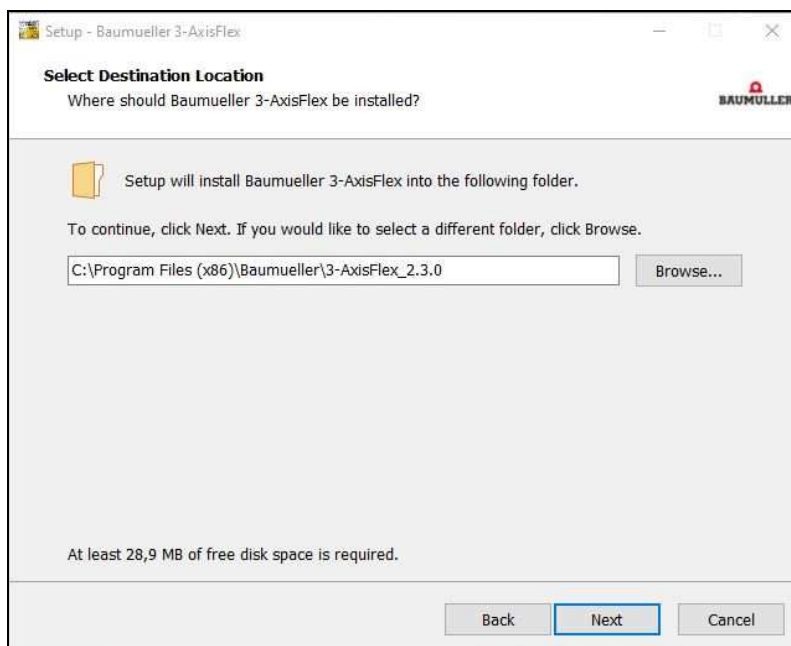


Illustration 6 - Setup on the development system - Destination folder

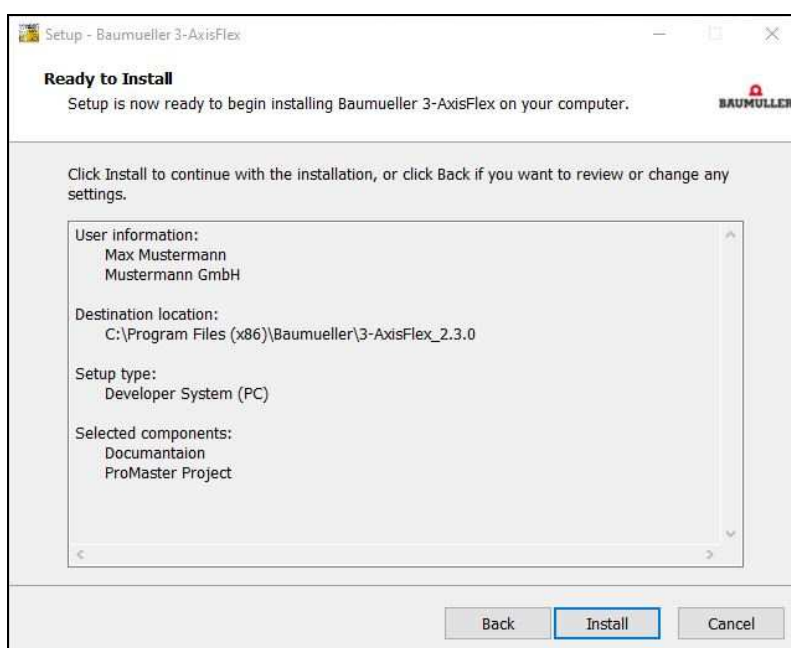


Illustration 7 - Setup on the development system - Summary

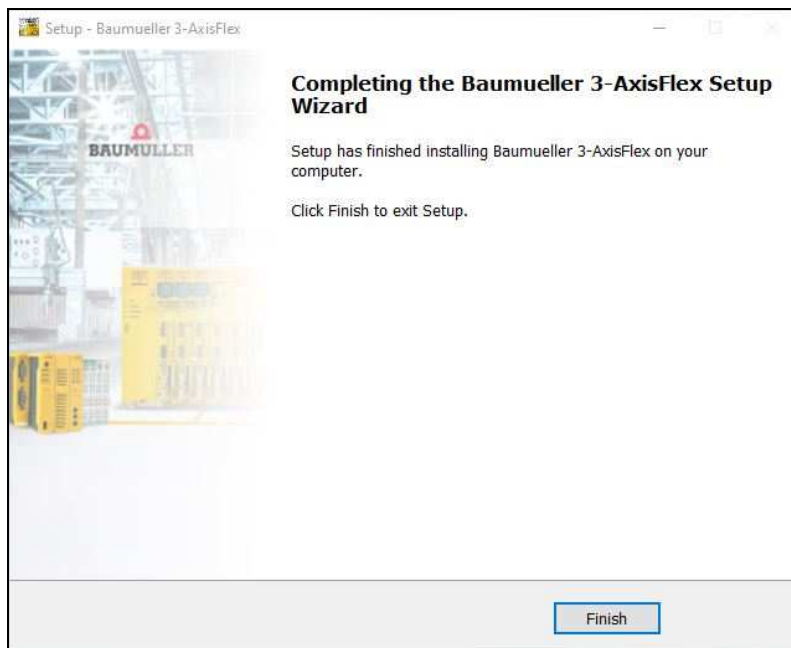



Illustration 8 - Setup on the development system – Completion

Note!	
	Once the setup is complete, the ProMaster project can be unpacked and the corresponding software components can be edited.

## 7.2 Setting up the controller system

The 3-AxisFlex software template already includes all the necessary components for quick commissioning. Starting with the PLC software, through the fieldbus configuration up to the visualisation, everything is included. After installing the software package, all that remains to be done is the drive commissioning.

Step 1 - Copy the setup package to the directory „D:\userdata“

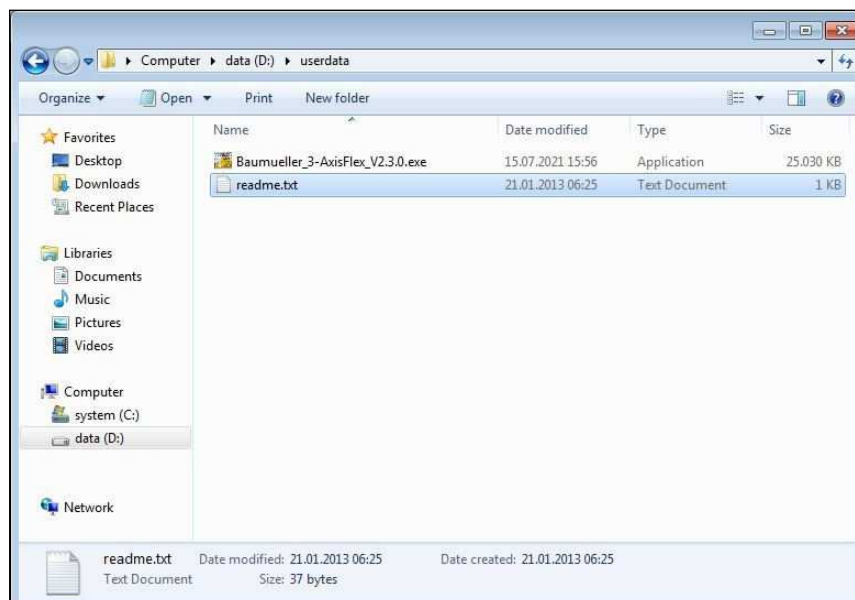


Illustration 9 - Setup package on the controller system

Step 2 - Start setup by double-clicking and follow the instructions of the setup wizard

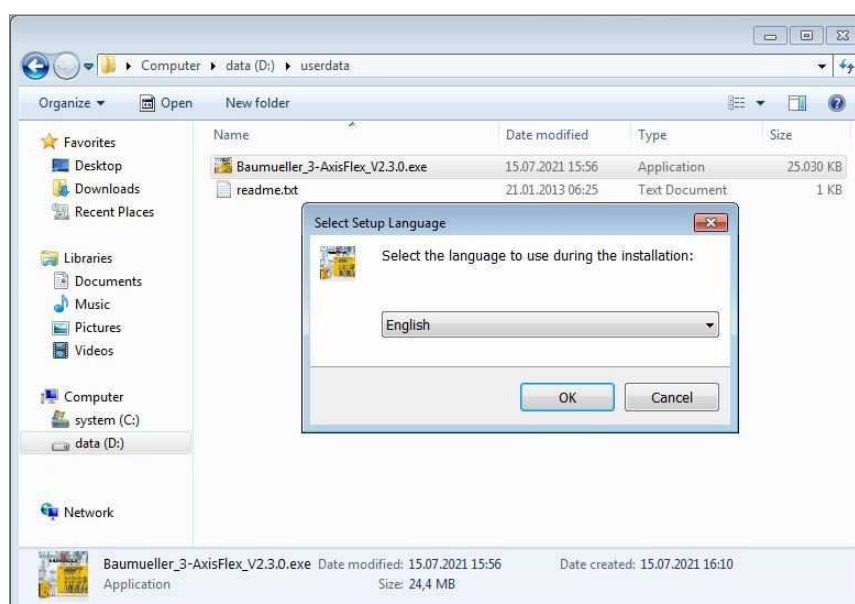


Illustration 10 - Setup on the controller system - Language selection

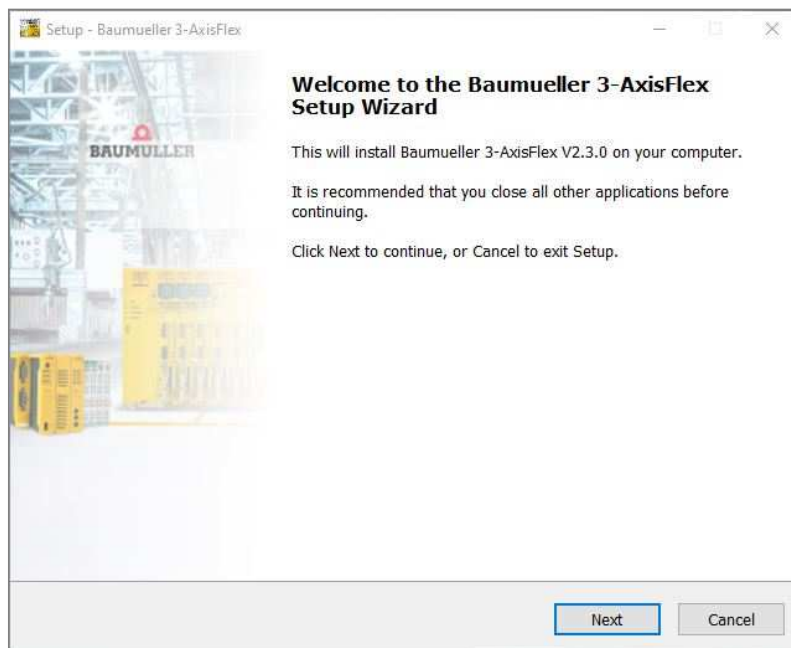


Illustration 11 - Setup on the controller system

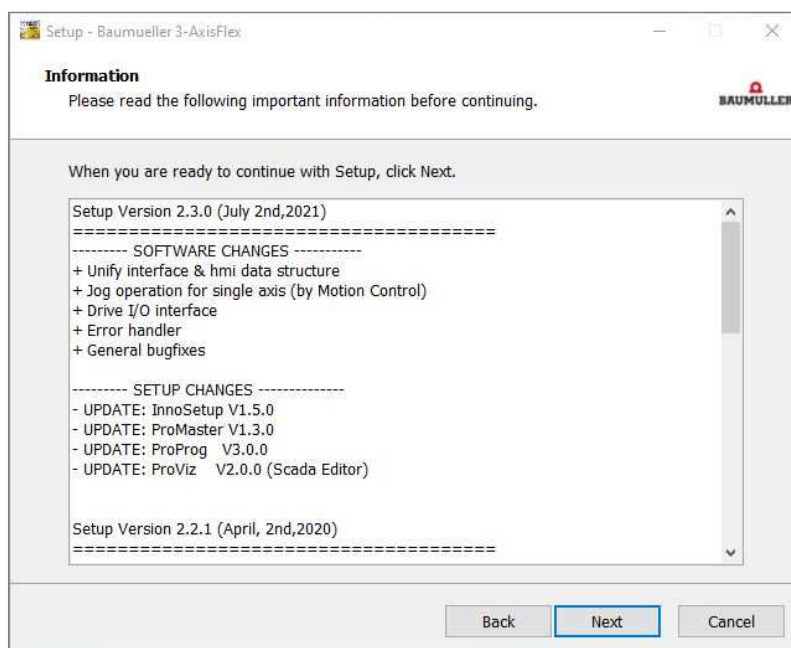


Illustration 12 - Setup on the controller system – History

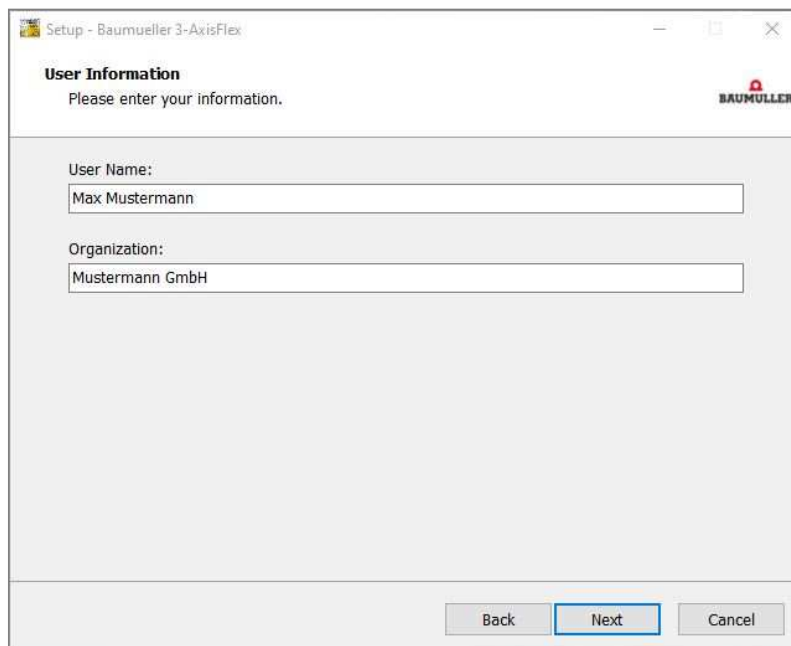


Illustration 13 - Setup on the controller system - User information

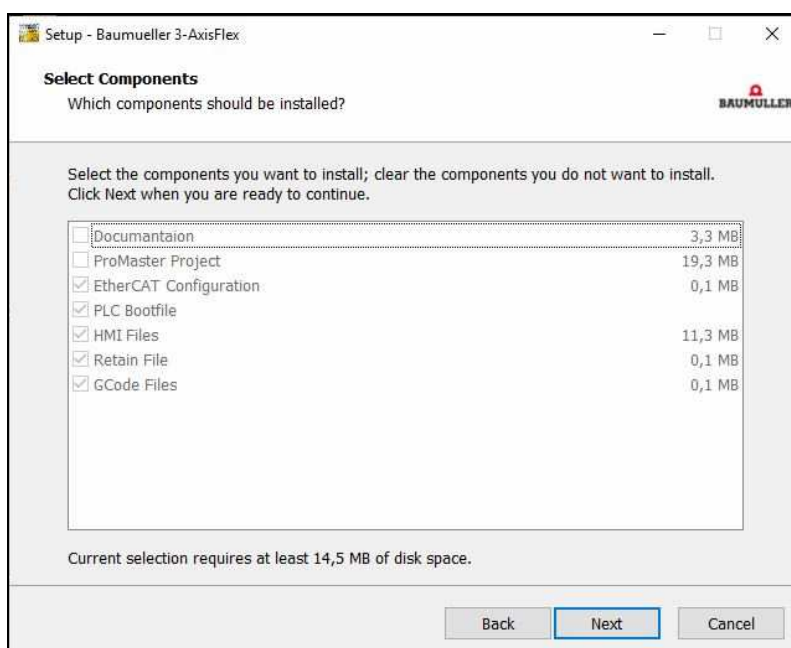


Illustration 14 - Setup on the controller system – Components

During software development, the programmer has the option of carrying out function tests without peripherals (drives, touch display, I/O module, etc.), i.e. exclusively with the PLC.

By selecting the option "Virtual axes", this function can already be used directly after setup.

For the "Real axes" option, the drives must be physically present and connected to the controller via field bus.

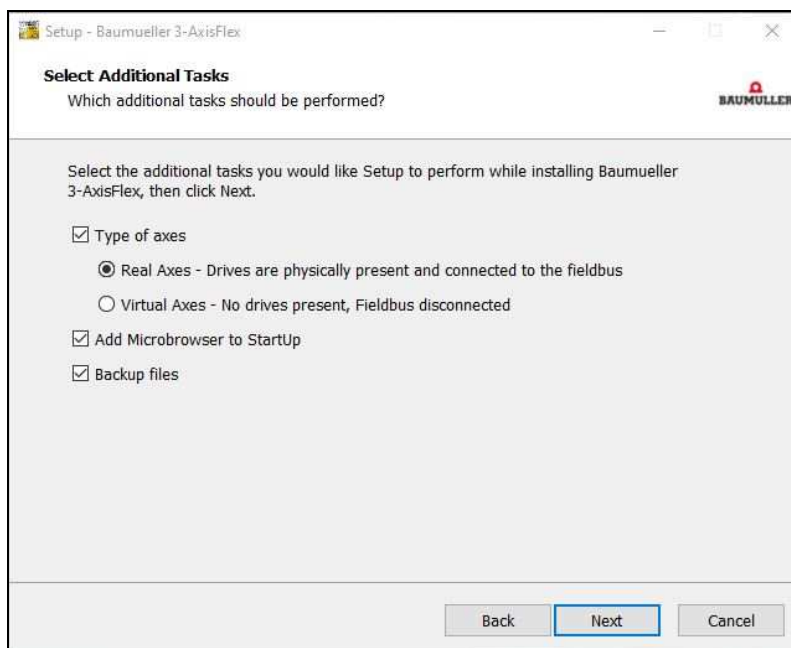



Illustration 15 - Setup on the controller system - Additional Tasks

	<p>To change the type of axes from "Virtual axes" to "Real axes", no new setup is required, the change is carried out directly in or with the controller project (ProProg).</p>

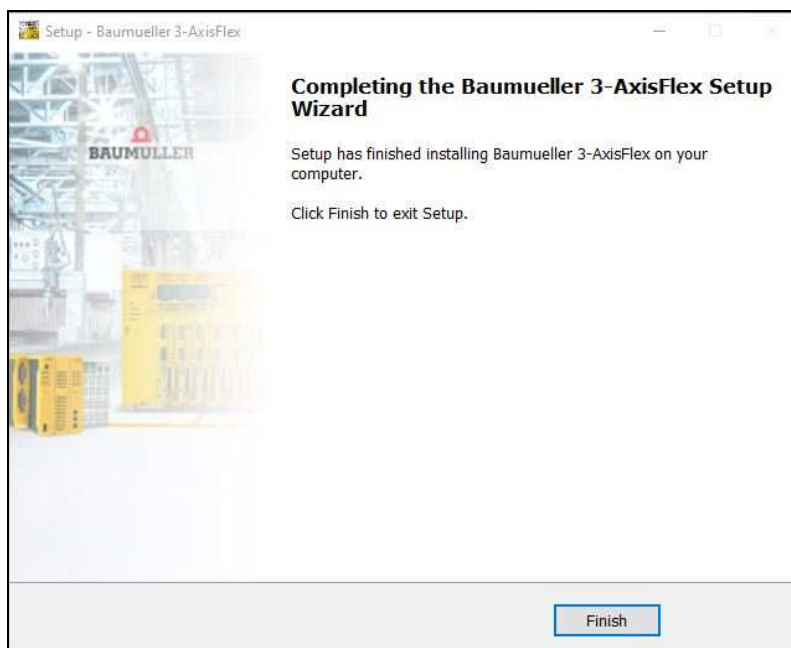



Illustration 16 - Setup on the controller system – Completion

Note!	
	Finally, the controller must be restarted after completing the setup.

## 8. List of illustrations

Illustration 1 - Setup package on the development system.....	6
Illustration 2 - Setup on the development system - Language selection .....	7
Illustration 3 - Setup on the development system.....	7
Illustration 4 - Setup on the development system – History .....	8
Illustration 5 - Setup on the development system - User information .....	8
Illustration 6 - Setup on the development system - Destination folder .....	9
Illustration 7 - Setup on the development system - Summary .....	9
Illustration 8 - Setup on the development system – Completion .....	10
Illustration 9 - Setup package on the controller system .....	11
Illustration 10 - Setup on the controller system - Language selection.....	11
Illustration 11 - Setup on the controller system .....	12
Illustration 12 - Setup on the controller system – History .....	12
Illustration 13 - Setup on the controller system - User information.....	13
Illustration 14 - Setup on the controller system – Components.....	13
Illustration 15 - Setup on the controller system - Additional Tasks .....	14
Illustration 16 - Setup on the controller system – Completion.....	15